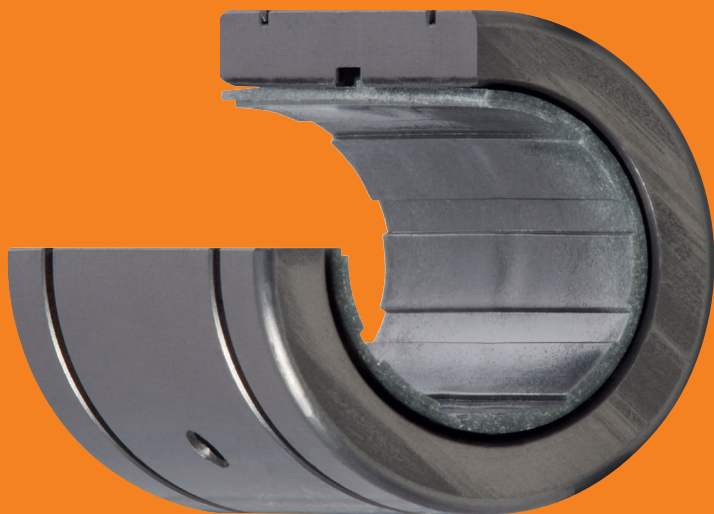
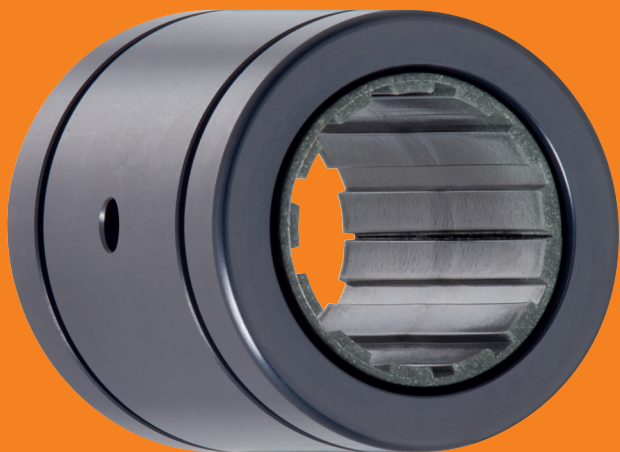


# igus® vs. PBC Simplicity®

## Cross Reference Guide



# Cross Reference Guide



## igus® E7 vs. PBC Simplicity®

CLOSED STRAIGHT LINEAR BEARINGS + ADAPTER

igus® P/N	Simplicity® P/N
RJZI-01-04	FL/FLC-04
RE7UI-01-06	FL/FLC-06
RE7UI-01-08	FL/FLC-08
RE7UI-01-10	FL/FLC-10
RE7UI-01-12	FL/FLC-12
RE7UI-01-16	FL/FLC-16
RE7UI-01-20	FL/FLC-20
RE7UI-01-24	FL/FLC-24
RE7UI-01-32	FL/FLC-32



## igus® E7 vs. PBC Simplicity®

OPEN STRAIGHT LINEAR BEARINGS + ADAPTER

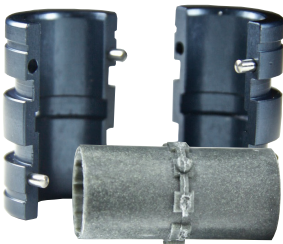
igus® P/N	Simplicity® P/N
OE7UI-01-08	FLN/FLCN-08
OE7UI-01-10	FLN/FLCN-10
OE7UI-01-12	FLN/FLCN-12
OE7UI-01-16	FLN/FLCN-16
OE7UI-01-20	FLN/FLCN-20
OE7UI-01-24	FLN/FLCN-24
OE7UI-01-32	FLN/FLCN-32



## igus® E7 split adapter for easy interchange

CLOSED VERSION ONLY

igus® P/N	Simplicity® P/N
<b>Straight</b>	
TE7UI-01-08	FL/FLC-08*
TE7UI-01-10	FL/FLC-10*
TE7UI-01-12	FL/FLC-12*
TE7UI-01-16	FL/FLC-16*
TE7UI-01-20	FL/FLC-20*
TE7UI-01-24	FL/FLC-24*
TE7UI-01-32	FL/FLC-32*
<b>Self-Aligning</b>	
TE7UI-03-08	FLA/FLAC-08*
TE7UI-03-10	FLA/FLAC-10*
TE7UI-03-12	FLA/FLAC-12*
TE7UI-03-16	FLA/FLAC-16*
TE7UI-03-20	FLA/FLAC-20*
TE7UI-03-24	FLA/FLAC-24*
TE7UI-03-32	FLA/FLAC-32*



\*Standard, non-split version

# Cross Reference Guide



## igus® E7 vs. PBC Simplicity®

CLOSED SELF-ALIGNING LINEAR BEARINGS + ADAPTER

igus® P/N	Simplicity® P/N
RJZI-03-04**	FLA/FLAC-04
RE7UI-03-06	FLA/FLAC-06
RE7UI-03-08	FLA/FLAC-08
RE7UI-03-10	FLA/FLAC-10
RE7UI-03-12	FLA/FLAC-12
RE7UI-03-16	FLA/FLAC-16
RE7UI-03-20	FLA/FLAC-20
RE7UI-03-24	FLA/FLAC-24
RE7UI-03-32	FLA/FLAC-32



## igus® E7 vs. PBC Simplicity®

OPEN SELF-ALIGNING LINEAR BEARINGS + ADAPTER

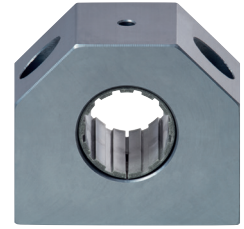
igus® P/N	Simplicity® P/N
OE7UI-03-08	FLAN/FLACN-08
OE7UI-03-10	FLAN/FLACN-10
OE7UI-03-12	FLAN/FLACN-12
OE7UI-03-16	FLAN/FLACN-16
OE7UI-03-20	FLAN/FLACN-20
OE7UI-03-24	FLAN/FLACN-24
OE7UI-03-32	FLAN/FLACN-32

\*\* Press-fit iglide® J liner

## Also available ...



- Pillow blocks
- Hard anodized aluminum shafting
- Steel shafting
- Stainless steel shafting
- Carbon fiber shafting



Open pillow block shown with optional igus® J liner

## Other igus® Materials

DryLin® linear bearings are also available in these materials, each with their own specific characteristics:



**igus® E7** was developed for long service life on steel and stainless steel shafts.



**igus® A180** is an FDA-compliant material for use in applications with direct food contact, such as food processing applications.



**igus® T500** is available for higher temperature applications, or those that require extreme chemical resistance.



**igus® J**, the original DryLin® material achieves the best general results with all shaft materials, it is also available in special low-clearance versions for increased precision.



**igus® J200** was developed for linear applications using hard-anodized aluminum shafts. Also available in low clearance geometries.

**igus.com**  
Plastics for longer life®

igus® Inc.  
PO Box 14349  
East Providence, RI 02914  
Tel: 800.521.2747  
Fax: 401.438.7270  
www.igus.com

iglide® Plastic Bearings  
igubal® Spherical Bearings  
DryLin® Linear Systems  
Energy Chain Systems®  
Chainflex® Motion Cables