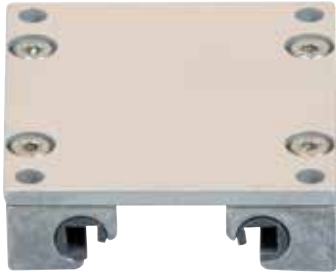


DryLin® W - Profile guides - Product range

Guide carriage, assembled, square



Order key

Type

Size

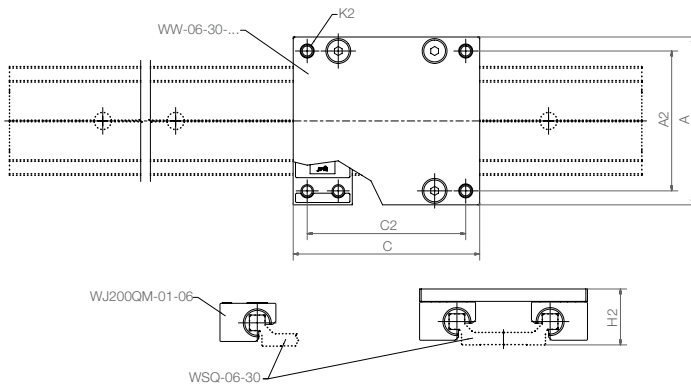
WW-06-30-06

Guide carriage

Shafts-Ø [mm]

Profile width

Carriage length



All parts can be ordered individually or as an assembled system

Technical data and dimensions [mm]

| Part No. | Weight | A | C | A2 | C2 | K2 | H2 ⁵⁷⁾ | Stat. load capacity | | | | |
|-------------|--------|-------|--------|----|----|----|-------------------|---------------------|-----|------|------|------|
| | | Width | Length | | | | ±0.25 | Coy | Coz | Mox | Moy | Moz |
| | | [kg] | | | | | | [N] | [N] | [Nm] | [Nm] | [Nm] |
| WW-06-30-06 | 0.10 | 54 | 60 | 45 | 51 | M4 | 18 | 1,680 | 840 | 25 | 34 | 34 |
| WW-06-30-08 | 0.11 | 54 | 80 | 45 | 71 | M4 | 18 | 1,680 | 840 | 25 | 51 | 51 |
| WW-06-30-10 | 0.12 | 54 | 100 | 45 | 91 | M4 | 18 | 1,680 | 840 | 25 | 68 | 68 |

⁵⁷⁾ Height dimension minus the bearing clearance tolerance



Order example:

WW-06-30-06: fitted guide carriage

WWC-06-30-06: Mono-Slide guide carriage

Can be combined with:



WSQ-...



WSXQ-...

Suitable liner materials



iglide® J200