



# DryLin® R - Liner, mm

## JUM-01, Standard, JUM-02 Short Standard

## JUM-20, Low Clearance, JUM-22 Short Low Clearance

## TUM-01, High Temp

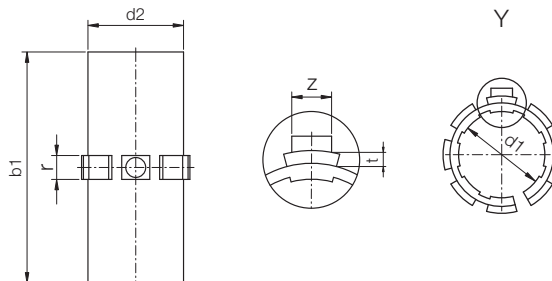
DryLin® R  
Linear Guide Systems

Telephone 1-800-521-2747  
1-401-438-7270  
Fax

Internet: <http://www.igus.com>  
email: [sales@igus.com](mailto:sales@igus.com)  
QuickSpec: <http://www.igus.com/iglide-quickspec>

### Special Properties

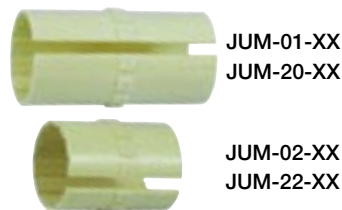
- Very low coefficients of friction while running dry
- Very high wear resistance
- Maintenance-free
- Vibration dampening
- Very low moisture absorption
- High chemical resistance
- Suitable for rotating, oscillating and linear movements



Part No.	d1	Tolerance*	d2	b1 JUM-01 standard	b1 JUM-02 short	r -0.1 -0.2	t -0.1	z -0.5	Weight (g)
----------	----	------------	----	--------------------------	-----------------------	-------------------	-----------	-----------	---------------

### Standard Clearance

JUM-01/02-10	10	.0300 -.0700	12	29	25	3.0	0.8	2.5	0.98
JUM-01/02-12	12	.0300 -.0700	14	31	27	3.0	0.8	3.0	1.38
JUM-01/02-16	16	.0300 -.0700	18	35	29	3.5	0.8	3.5	1.82
JUM-01/02-20	20	.0300 -.0700	23	44	29	5.0	0.8	3.5	3.25
JUM-01/02-25	25	.0300 -.0700	28	57	39	5.0	0.8	4.0	5.80
JUM-01/02-30	30	.0400 -.0850	34	67	49	5.0	0.8	4.0	11.15
JUM-01/02-40	40	.0400 -.0850	44	79	59	6.0	1.3	5.0	18.01
JUM-01/02-50	50	.0500 -.1000	55	99	69	7.0	1.3	6.0	32.60



**Material:** iglide® J  
**Temp. range:** -40°F to +194°F  
**Best Shaft Material:** DryLin®  
AWI hard anodized aluminum,  
case hardened steel, 300 series  
stainless

### Low Clearance

JUM-20/22-10	10	.0150 -.0350	12	29	25	3.0	0.8	2.5	0.98
JUM-20/22-12	12	.0150 -.0350	14	31	27	3.0	0.8	3.0	1.38
JUM-20/22-16	16	.0150 -.0350	18	35	29	3.5	0.8	3.5	1.82
JUM-20/22-20	20	.0150 -.0350	23	44	29	5.0	0.8	3.5	3.25
JUM-20/22-25	25	.0150 -.0350	28	57	39	5.0	0.8	4.0	5.80
JUM-20/22-30	30	.0200 -.0425	34	67	49	5.0	0.8	4.0	11.15
JUM-20/22-40	40	.0200 -.0425	44	79	59	6.0	1.3	5.0	18.01
JUM-20/22-50	50	.0250 -.0500	55	99	69	7.0	1.3	6.0	32.60

### High Temperature

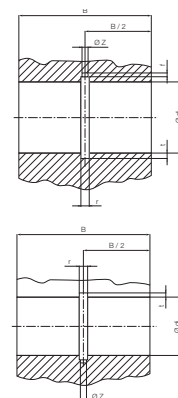
TUM-01-12	12	.0300 -.0700	14	31	—	3.0	0.8	3.0	0.048
TUM-01-16	16	.0300 -.0700	18	35	—	3.5	0.8	3.5	0.064
TUM-01-20	20	.0300 -.0700	23	44	—	5.0	0.8	3.5	0.114
TUM-01-25	25	.0300 -.0700	28	57	—	5.0	0.8	4.0	0.203
TUM-01-30	30	.0400 -.0850	34	67	—	5.0	0.8	4.0	0.390



**Material:** iglide® T500  
**Temp. range:** -148°F to +482°F  
**Best Shaft Material:** Hardened  
stainless and hard chrome plated  
steel

### Housing Bore for Liner JUM-01(02)/JUM-20(22)/TUM-01 Dimensions (mm)

Part No.	Nominal Size	di H7	B		r +0.05	t +0.1	f +0.5	z +0.2
			01/20 Standard h10	02/22 Short				
JUM-01(02)(20)(22)	10	12	29	26	3.0	0.8	1.0	2.6
JUM-01(02)(20)(22) / TUM-01-12	12	14	32	28	3.0	0.8	1.5	3.1
JUM-01(02)(20)(22) / TUM-01-16	16	18	36	30	3.5	0.8	1.7	3.6
JUM-01(02)(20)(22) / TUM-01-20	20	23	45	30	5.0	0.8	2.0	3.6
JUM-01(02)(20)(22) / TUM-01-25	25	28	58	40	5.0	0.8	2.0	4.1
JUM-01(02)(20)(22) / TUM-01-30	30	34	68	50	5.0	0.8	2.0	4.1
JUM-01(02)(20)(22)	40	44	80	60	6.0	1.3	2.5	5.1
JUM-01(02)(20)(22)	50	55	100	70	7.0	1.3	2.5	6.1



# DryLin® R - Liner, mm

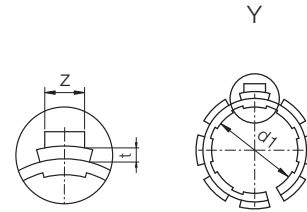
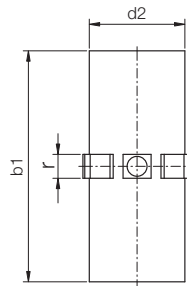
## JUMO-01, Open, Standard

## JUMO-20, Open, Low Clearance



### Special Properties

- Open design for supported shafts
- Very low coefficients of friction while running dry
- Very high wear resistance
- Maintenance-free
- Vibration dampening
- Very low moisture absorption
- High chemical resistance
- Suitable for rotating, oscillating and linear movements
- Recommended housing bore H7



Part No.	d1	Tolerance*	d2	b1	W	r		t	z	Weight (g)
						+0.2	-0.1 -0.2			

### Standard Clearance

JUMO-01-10	10	.0300 - .0700	12	29	7.3	3.0	0.8	2.5	0.8
JUMO-01-12	12	.0300 - .0700	14	31	9.0	3.0	0.8	3.0	1.7
JUMO-01-16	16	.0300 - .0700	18	35	11.6	3.5	0.8	3.5	2.5
JUMO-01-20	20	.0300 - .0700	23	44	12.0	5.0	0.8	3.5	4.2
JUMO-01-25	25	.0300 - .0700	28	57	14.5	5.0	0.8	4.0	5.9
JUMO-01-30	30	.0400 - .0850	34	67	16.6	5.0	0.8	4.0	12.0
JUMO-01-40	40	.0400 - .0850	44	79	21.0	6.0	1.3	5.0	20.0
JUMO-01-50	50	.0500 - .1000	55	99	25.5	7.0	1.3	6.0	36.0

### Low Clearance

JUMO-20-10	10	.0150 - .0350	12	29	7.3	3.0	0.8	2.5	0.8
JUMO-20-12	12	.0150 - .0350	14	31	9.0	3.0	0.8	3.0	1.7
JUMO-20-16	16	.0150 - .0350	18	35	11.6	3.5	0.8	3.5	2.5
JUMO-20-20	20	.0150 - .0350	23	44	12.0	5.0	0.8	3.5	4.2
JUMO-20-25	25	.0150 - .0350	28	57	14.5	5.0	0.8	4.0	5.9
JUMO-20-30	30	.0200 - .0425	34	67	16.6	5.0	0.8	4.0	12.0
JUMO-20-40	40	.0200 - .0425	44	79	21.0	6.0	1.3	5.0	20.0
JUMO-20-50	50	.0250 - .0500	55	99	25.5	7.0	1.3	6.0	36.0

\* according to igus® testing method ➤ Page 29.57

### JUMO-01/20



**Material:** iglide® J  
**Temp. range:** -40°F to +194°F  
**Best Shaft Material:** DryLin® AWI hard anodized aluminum, case hardened steel, 300 series stainless  
 \*\*Call for high temperature options

### Liners of the Series JUMO-01 are used in:

- OJUM-01, Page 29.36
- OJUM-03, Page 29.38
- OJUM-06, Page 29.46

PDF: [www.igus.com/iglide-pdfs](http://www.igus.com/iglide-pdfs)  
 CAD: [www.igus.com/iglide-CAD](http://www.igus.com/iglide-CAD)  
 RoHS info: [www.igus.com/RoHS](http://www.igus.com/RoHS)

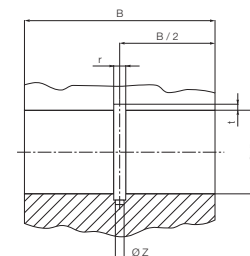
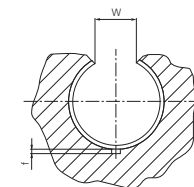


### Installation Drawings

#### Housing Bore, Dimensions (mm)

Part No.	Nominal	di	B	r	t	f	z	W
	Size	H7	h10	+0.05	+0.1	+0.5	+0.2	+0.2
JUMO-01 / JUMO-20-10	10	12	29	3.0	0.8	1.0	2.6	7.3
JUMO-01 / JUMO-20-12	12	14	32	3.0	0.8	1.5	3.1	9.0
JUMO-01 / JUMO-20-16	16	18	36	3.5	0.8	1.7	3.6	11.6
JUMO-01 / JUMO-20-20	20	23	45	5.0	0.8	2.0	3.6	12.0
JUMO-01 / JUMO-20-25	25	28	58	5.0	0.8	2.0	4.1	14.5
JUMO-01 / JUMO-20-30	30	34	68	5.0	0.8	2.0	4.1	16.6
JUMO-01 / JUMO-20-40	40	44	80	6.0	1.3	2.5	5.1	21.0
JUMO-01 / JUMO-20-50	50	55	100	7.0	1.3	2.5	6.1	25.5

\* according to igus® testing method ➤ Page 29.57



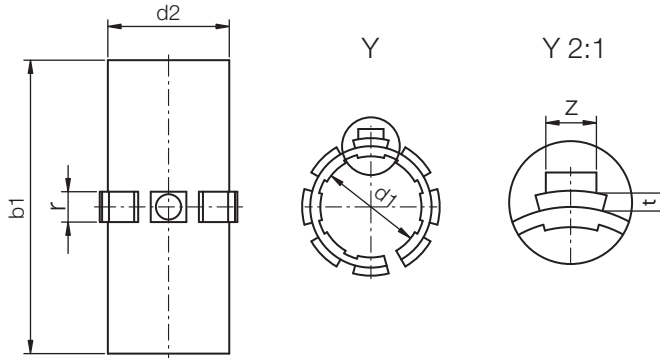


**Special Properties**

- Made of iglide® T500 (in two parts)
- Recommended for high temperature applications over 176°F up to 482°F (80°C up to 250°C)
- High chemical resistance
- Maintenance-free
- Very low moisture absorption
- Available for all adapters and pillow blocks (Ø12 mm - 30 mm)
- Recommended for use on stainless steel or hard chromed steel

**Liners of the Series JUM-01 are used in:**

- RJUM-01, Page 29.28
- RJUM-03, Page 29.30
- RJUM-06, Page 29.43
- TJUM-01, Page 29.32
- TJUM-03, Page 29.34
- FJUM-01, Page 29.49
- FJUM-02, Page 29.50



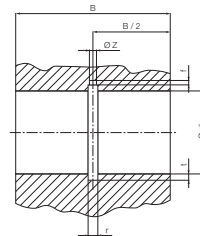
**Dimensions (mm)**

Part No.	d1	Tolerance*	d2	b1	r -0.1/-0.2	t -0.1	z -0.5	Weight (oz) -0.2
TUMO-01-10**	10	.0000 - .0700	12	28	3.0	0.8	2.5	0.035
TUM-01-12	12	.0300 - .0700	14	31	3.0	0.8	3.0	0.048
TUM-01-16	16	.0300 - .0700	18	35	3.5	0.8	3.5	0.064
TUM-01-20	20	.0300 - .0700	23	44	5.0	0.8	3.5	0.114
TUM-01-25	25	.0300 - .0700	28	57	5.0	0.8	4.0	0.203
TUM-01-30	30	.0400 - .0850	34	67	5.0	0.8	4.0	0.390

\* according to iglus® testing method ➤ Page 29.57

**Housing bore Dimensions (mm)**

Part No.	Nominal	di	B	r	t	f	z
	Size	H7	h10	+0.05	+0.1	+0.5	+0.2
TUMO-01-10**	10	12	29	3.0	1.0	1.0	2.6
TUM-01-12	12	14	32	3.0	1.0	1.5	3.1
TUM-01-16	16	18	36	3.5	1.0	1.7	3.6
TUM-01-20	20	23	45	5.0	1.0	2.0	3.6
TUM-01-25	25	28	58	5.0	1.0	2.0	4.1
TUM-01-30	30	34	68	5.0	1.0	2.0	4.1



\*\* Only available in the open design

Liners of Series TUM-01 can be used in all housings designed for DryLin® R standard series. (Call for assistance)



## Special Properties

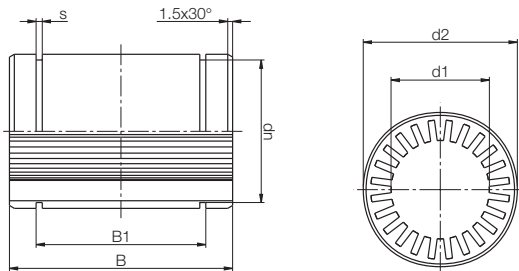


- Plain bearing made of all plastic
- Dimensions corresponds to the standard for recirculating ball bearings
- Recommended housing bore H7
- Secured by retaining clips according to DIN 471 or 472 (not included in delivery)
- Designed as a press-fit part, it will be oversized in free-state

### Liners of the Series

#### RJM-01 are used in:

- ▶ RQA-04, Page 29.53
- ▶ RTA-04, Page 29.54
- ▶ RGA-04, Page 29.55
- ▶ RGAS-04, Page 29.56



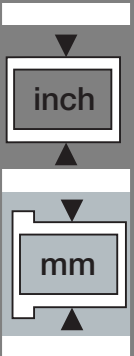
## Dimensions (mm)

Part No.	d1	d2	B	B1	s	dn
RJM-01-08	8	16	25	16.2	1.10	15.2
RJM-01-10	10	19	29	21.6	1.30	17.5
RJM-01-12	12	22	32	22.6	1.30	20.5
RJM-01-16	16	26	36	24.6	1.30	24.2
RJM-01-20	20	32	45	31.2	1.60	29.6
RJM-01-25	25	40	58	43.7	1.85	36.5
RJM-01-30	30	47	68	51.7	1.85	43.5
RJM-01-40	40	62	80	60.3	2.15	57.8
RJM-01-50	50	75	100	77.3	2.65	70.5

\* according to igus® testing method ▶ Page 29.57

## Technical Data

Part No.	Nominal Size	Housing Bore		Tolerance for d1	pmax. Dynamic Load p = 2.5 MPa (N)	pmax. Static Load p = 17.5 MPa (N)	Weight (g)
		Max.	Min.				
RJM-01-08	8	16.018	16.000	.0250 - .0610	250	1750	9
RJM-01-10	10	19.021	19.000	.0320 - .0750	363	2538	14
RJM-01-12	12	22.021	22.000	.0320 - .0750	480	3360	21
RJM-01-16	16	26.021	26.000	.0320 - .0750	720	5040	28
RJM-01-20	20	32.025	32.000	.0400 - .0920	1125	7875	49
RJM-01-25	25	40.025	40.000	.0400 - .0920	1813	12688	108
RJM-01-30	30	47.025	47.000	.0400 - .0920	2550	17850	162
RJM-01-40	40	62.030	62.000	.0500 - .1120	4000	28000	334
RJM-01-50	50	75.030	75.000	.0600 - .1340	6250	43750	579



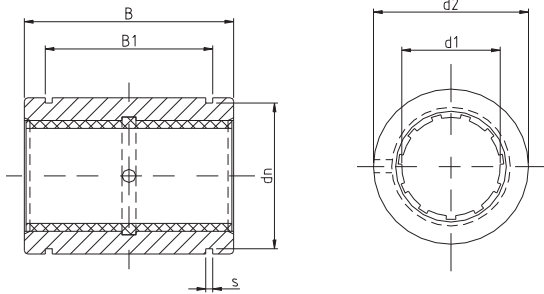


### Special Properties

- Closed, anodized aluminum adapter
- Dimensions equivalent to the standard for recirculating ball bearings
- Equipped with JUM-01 liner made of iglide® J
- Secured by retaining clips according to DIN 471 or 472 (not included in delivery)
- Recommended housing bore H7

**RJUM-01 Bearings are used in:**

- RQA-01, Page 29.53
- RTA-01, Page 29.54
- RGA-01, Page 29.55
- RGAS-01, Page 29.56



### Dimensions (mm)

Part No.	d1	d2 h7	B h10	B1	s	dn
RJZM-01-05*	5	12	22	14.2	1.10	11.5
RJZM-01-08*	8	16	25	16.2	1.10	15.2
RJUM-01-10	10	19	29	21.6	1.30	17.5
RJUM-01-12	12	22	32	22.6	1.30	20.5
RJUM-01-16	16	26	36	24.6	1.30	24.2
RJUM-01-20	20	32	45	31.2	1.60	29.6
RJUM-01-25	25	40	58	43.7	1.85	36.5
RJUM-01-30	30	47	68	51.7	1.85	43.5
RJUM-01-40	40	62	80	60.3	2.15	57.8
RJUM-01-50	50	75	100	77.3	2.65	70.5

### Housing Bore Dimensions

Nominal Size	METRIC	
	Min.	Max.
8	16.000	16.018
10	19.000	19.021
12	22.000	22.021
16	26.000	26.021
20	32.000	32.025
25	40.000	40.025
30	47.000	47.025
40	62.000	62.030
50	75.000	75.030

\* nominal width under 10 mm are delivered with pressfit cylindrical plain bearings  
\* according to iglus® testing method ➤ Page 29.57

### Load Data

Part No.	Nominal Size	Tolerance** Bearing Inner Diameter	pmax. Dynamic Load	pmax. Static Load	Weight (g)
			P = 5 MPa (N)	P = 35 MPa (N)	
RJZM-01-05*	5	.0250 - .0600	525	3675	5
RJZM-01-08*	8	.0320 - .0700	960	6720	9
RJUM-01-10	10	.0300 - .0880	725	5075	14
RJUM-01-12	12	.0300 - .0880	960	6720	21
RJUM-01-16	16	.0300 - .0880	1440	10080	28
RJUM-01-20	20	.0300 - .0910	2250	15750	49
RJUM-01-25	25	.0300 - .0910	3625	25375	108
RJUM-01-30	30	.0400 - .1100	5100	35700	162
RJUM-01-40	40	.0400 - .1150	8000	56000	334
RJUM-01-50	50	.0500 - .1300	12500	87500	579

# DryLin® R Straight, Low Clearance Linear Bearing RJUM-21, mm

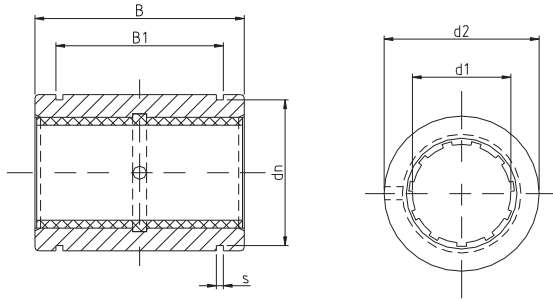


## Special Properties

- Closed, anodized aluminum adapter
- Dimensions equivalent to the standard for recirculating ball bearings
- Equipped with JUM-20 liner made of iglide® J
- Secured by retaining clips according to DIN 471 or 472 (not included in delivery)
- Recommended housing bore H7

### RJUM-21 Bearings are used in:

- ▶ RQA-01, Page 29.53
- ▶ RTA-01, Page 29.54
- ▶ RGA-01, Page 29.55
- ▶ RGAS-01, Page 29.56



## Dimensions (mm)

Part No.	d1	d2 h7	B h10	B1	s	dn
RJZM-21-05*	5	12	22	14.2	1.10	11.5
RJZM-21-08*	8	16	25	16.2	1.10	15.2
RJUM-21-10	10	19	29	21.6	1.30	17.5
RJUM-21-12	12	22	32	22.6	1.30	20.5
RJUM-21-16	16	26	36	24.6	1.30	24.2
RJUM-21-20	20	32	45	31.2	1.60	29.6
RJUM-21-25	25	40	58	43.7	1.85	36.5
RJUM-21-30	30	47	68	51.7	1.85	43.5
RJUM-21-40	40	62	80	60.3	2.15	57.8
RJUM-21-50	50	75	100	77.3	2.65	70.5

\* nominal width under 10 mm are delivered with pressfit cylindrical plain bearings

\* according to iglus® testing method ▶ Page 29.57

## Load Data

Part No.	Nominal Size	Tolerance** Bearing Inner Diameter	pmax.	pmax.	Weight (g)
			Dynamic Load P = 5 MPa (N)	Static Load P = 35 MPa (N)	
RJZM-21-05*	5	.0125 - .0300	525	3675	5
RJZM-21-08*	8	.0160 - .0350	960	6720	9
RJUM-21-10	10	.0150 - .0440	725	5075	14
RJUM-21-12	12	.0150 - .0440	960	6720	21
RJUM-21-16	16	.0150 - .0440	1440	10080	28
RJUM-21-20	20	.0150 - .0440	2250	15750	49
RJUM-21-25	25	.0150 - .0440	3625	25375	108
RJUM-21-30	30	.0200 - .0550	5100	35700	162
RJUM-21-40	40	.0200 - .0575	8000	56000	334
RJUM-21-50	50	.0250 - .0650	12500	87500	579

DryLin® R  
Linear Guide Systems

PDF: [www.igus.com/iglide-pdfs](http://www.igus.com/iglide-pdfs)  
CAD: [www.igus.com/iglide-CAD](http://www.igus.com/iglide-CAD)  
RoHS info: [www.igus.com/RoHS](http://www.igus.com/RoHS)



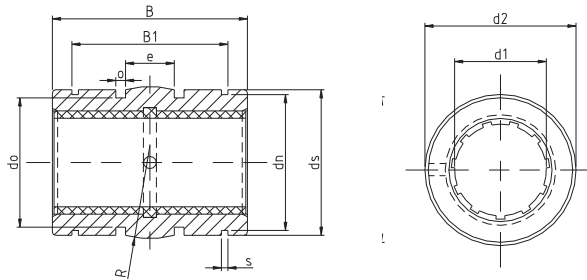


### Special Properties

- Closed aluminum adapter with
  - reduced outer diameter
  - spherical area on the outer diameter for automatic alignment compensation
  - O-rings for elastic seating
  - hard-anodized
- Equipped with JUM-01 liner made of iglide® J
- Dimensions otherwise equivalent to the standard for recirculating ball bearings
- Secured by retaining clips according to DIN 471 or 472 (not included in delivery)
- Recommended housing bore H7
- O-ring grease recommended for install

**RJUM-03 Bearings are used in:**

- RQA-01, Page 29.53
- RTA-01, Page 29.54
- RGA-01, Page 29.55
- RGAS-01, Page 29.56



### Dimensions (mm)

Part No.	d1	d2	B	B1	s	dn	ds	do	o	e	R
		h8	h10	H10	H10	h10	h10	h10	+0.1		
RJZM-03-08*	8	15.8	24.9	16.4	1.10	15.0	15.5	13.2	1.86	5.0	20.0
RJUM-03-10	10	18.8	28.9	21.8	1.30	17.5	18.5	15.4	1.86	5.0	13.0
RJUM-03-12	12	21.8	31.9	22.8	1.30	20.5	21.5	18.4	1.86	6.0	18.0
RJUM-03-16	16	25.8	35.9	24.9	1.30	24.2	25.5	20.4	2.86	8.0	32.0
RJUM-03-20	20	31.8	44.8	31.5	1.60	29.6	31.5	26.4	2.86	10.0	50.0
RJUM-03-25	25	39.8	57.8	44.1	1.85	36.5	39.5	34.4	2.86	12.5	39.0
RJUM-03-30	30	46.7	67.8	52.1	1.85	43.5	46.0	41.4	2.86	15.0	57.0
RJUM-03-40	40	61.7	79.8	60.9	2.15	57.8	61.0	56.4	2.86	20.0	100.0
RJUM-03-50	50	74.7	99.8	78.0	2.65	70.5	74.0	69.4	2.86	25.0	157.0

### Housing Bore Dimensions

Nominal Size	METRIC	
	Min.	Max.
8	16.000	16.018
10	19.000	19.021
12	22.000	22.021
16	26.000	26.021
20	32.000	32.025
25	40.000	40.025
30	47.000	47.025
40	62.000	62.030
50	75.000	75.030

### Load Data

Part No.	Nominal Size	Housing Bore i.d. h7 (mm)	Tolerance** Bearing Inner Diameter	pmax. Dynamic Load P = 5 MPa (N)	pmax. Static Load P = 35 MPa (N)	Weight (g)
RJZM-03-08*	8	16	.0320 - .0700	960	6720	8
RJUM-03-10	10	19	.0300 - .0880	725	5075	11
RJUM-03-12	12	22	.0300 - .0880	960	6720	17
RJUM-03-16	16	26	.0300 - .0880	1440	10080	23
RJUM-03-20	20	32	.0300 - .0910	2250	15750	44
RJUM-03-25	25	40	.0300 - .0910	3625	25375	92
RJUM-03-30	30	47	.0400 - .1100	5100	35700	145
RJUM-03-40	40	62	.0400 - .1150	8000	56000	311
RJUM-03-50	50	75	.0500 - .1300	12500	87500	542

\* nominal width under 10 mm are delivered with pressfit cylindrical plain bearings

\*\* according to iglus® testing method ➤ Page 29.57

# DryLin® R Self-Aligning, Low Clearance Linear Bearing RJUM-23, mm

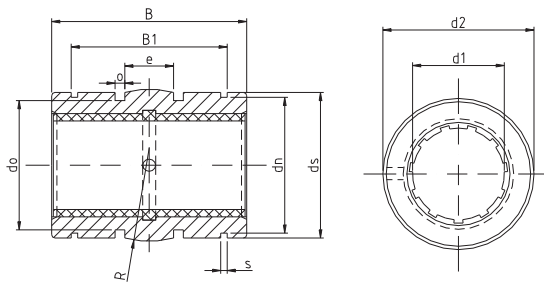


## Special Properties

- Closed aluminum adapter with
  - reduced outer diameter
  - spherical area on the outer diameter for automatic alignment compensation
  - O-rings for elastic seating
  - hard-anodized
- Equipped with JUM-20 liner made of iglide® J
- Dimensions otherwise equivalent to the standard for recirculating ball bearings
- Secured by retaining clips according to DIN 471 or 472 (not included in delivery)
- Recommended housing bore H7
- O-ring grease recommended for install

### RJUM-23 Bearings are used in:

- ▶ RQA-01, Page 29.53
- ▶ RTA-01, Page 29.54
- ▶ RGA-01, Page 29.55
- ▶ RGAS-01, Page 29.56



## Dimensions (mm)

Part No.	d1	d2 h8	B h10	B1 H10	s H10	dn h10	ds h10	d0 h10	o +0.1	e	R
RJZM-23-08*	8	15.8	24.9	16.4	1.10	15.0	15.5	13.2	1.86	5.0	20.0
RJUM-23-10	10	18.8	28.9	21.8	1.30	17.5	18.5	15.4	1.86	5.0	13.0
RJUM-23-12	12	21.8	31.9	22.8	1.30	20.5	21.5	18.4	1.86	6.0	18.0
RJUM-23-16	16	25.8	35.9	24.9	1.30	24.2	25.5	20.4	2.86	8.0	32.0
RJUM-23-20	20	31.8	44.8	31.5	1.60	29.6	31.5	26.4	2.86	10.0	50.0
RJUM-23-25	25	39.8	57.8	44.1	1.85	36.5	39.5	34.4	2.86	12.5	39.0
RJUM-23-30	30	46.7	67.8	52.1	1.85	43.5	46.0	41.4	2.86	15.0	57.0
RJUM-23-40	40	61.7	79.8	60.9	2.15	57.8	61.0	56.4	2.86	20.0	100.0
RJUM-23-50	50	74.7	99.8	78.0	2.65	70.5	74.0	69.4	2.86	25.0	157.0

## Load Data

Part No.	Nominal Size	Housing Bore i.d. (mm)	Tolerance** Bearing Inner Diameter	pmax.	pmax.	Weight (g)
				Dynamic Load P = 5 MPa (N)	Static Load P = 35 MPa (N)	
RJZM-23-08*	8	16	.0160 - .0350	960	6720	8
RJUM-23-10	10	19	.0150 - .0440	725	5075	11
RJUM-23-12	12	22	.0150 - .0440	960	6720	17
RJUM-23-16	16	26	.0150 - .0440	1440	10080	23
RJUM-23-20	20	32	.0150 - .0455	2250	15750	44
RJUM-23-25	25	40	.0150 - .0455	3625	25375	92
RJUM-23-30	30	47	.0200 - .0550	5100	35700	145
RJUM-23-40	40	62	.0200 - .0575	8000	56000	311
RJUM-23-50	50	75	.0250 - .0650	12500	87500	542

\* nominal width under 10 mm are delivered with pressfit cylindrical plain bearings

\* according to igus® testing method ▶ Page 29.57

DryLin® R  
Linear Guide Systems

PDF: [www.igus.com/iglide-pdfs](http://www.igus.com/iglide-pdfs)  
CAD: [www.igus.com/iglide-CAD](http://www.igus.com/iglide-CAD)  
RoHS info: [www.igus.com/RoHS](http://www.igus.com/RoHS)







# DryLin® R Straight, Split Linear Bearing TJUM-01, mm

DryLin® R  
Linear Guide Systems

Telephone 1-800-521-2747  
1-401-438-7270  
Fax

Internet: <http://www.igus.com>  
email: [sales@igus.com](mailto:sales@igus.com)  
QuickSpec: <http://www.igus.com/iglide-quickspec>

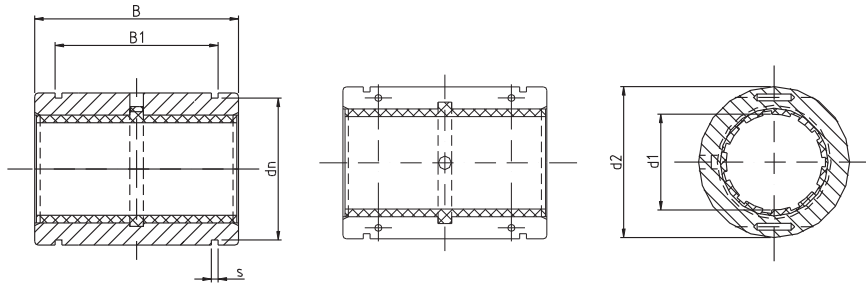


### Special Properties

- Split, anodized aluminum adapter
- Dimensions equivalent to the standard for recirculating ball bearings
- Equipped with JUM-01 liner made of iglide® J
- Secured by retaining clips according to DIN 471 or 472 (not included in delivery)
- Recommended housing bore H7

**TJUM-01 Bearings are used in:**

- ▶ RQA-01, Page 29.53
- ▶ RTA-01, Page 29.54
- ▶ RGA-01, Page 29.55
- ▶ RGAS-01, Page 29.56



### Housing Bore Dimensions

Nominal Size	METRIC	
	Min.	Max.
8	16.000	16.018
10	19.000	19.021
12	22.000	22.021
16	26.000	26.021
20	32.000	32.025
25	40.000	40.025
30	47.000	47.025
40	62.000	62.030
50	75.000	75.030

### Dimensions (mm)

Part No.	d1	d2	Tolerance	B h10	B1 H10	s H10	dn
TJUM-01-10	10	19	-.0200 /-.0400	29	21.6	1.30	17.5
TJUM-01-12	12	22	-.0200 /-.0400	32	22.6	1.30	20.5
TJUM-01-16	16	26	-.0200 /-.0400	36	24.6	1.30	24.2
TJUM-01-20	20	32	-.0200 /-.0450	45	31.2	1.60	29.6
TJUM-01-25	25	40	-.0300 /-.0550	58	43.7	1.85	36.5
TJUM-01-30	30	47	-.0300 /-.0550	68	51.7	1.85	43.5
TJUM-01-40	40	62	-.0300 /-.0600	80	60.3	2.15	57.8
TJUM-01-50	50	75	-.0300 /-.0600	100	77.3	2.65	70.5

### Load Data

Part No.	Nominal Size	Tolerance* Bearing Inner Diameter	pmax. Dynamic Load P = 5 MPa (N)	pmax. Static Load P = 35 MPa (N)	Weight (g)
TJUM-01-10	10	.0300 - .0920	725	5075	14
TJUM-01-12	12	.0300 - .0970	960	6720	19
TJUM-01-16	16	.0300 - .0970	1440	10080	27
TJUM-01-20	20	.0300 - .1030	2250	15750	49
TJUM-01-25	25	.0300 - .1030	3625	25375	106
TJUM-01-30	30	.0400 - .1240	5100	35700	166
TJUM-01-40	40	.0400 - .1240	8000	56000	347
TJUM-01-50	50	.0500 - .1460	12500	87500	577

\* according to iglus® testing method ▶ Page 29.57

# DryLin® R Straight, Split, Low Clearance Linear Bearing TJUM-21, mm

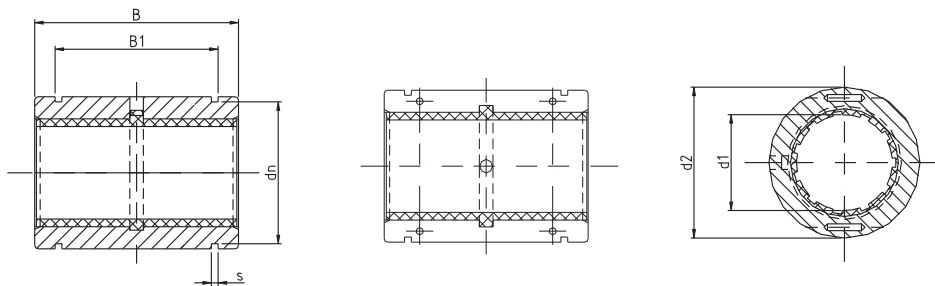


## Special Properties

- Split, anodized aluminum adapter
- Dimensions equivalent to the standard for recirculating ball bearings
- Equipped with JUM-20 liner made of iglide® J
- Secured by retaining clips according to DIN 471 or 472 (not included in delivery)
- Recommended housing bore H7

## TJUM-21 Bearings are used in:

- ▶ RQA-01, Page 29.53
- ▶ RTA-01, Page 29.54
- ▶ RGA-01, Page 29.55
- ▶ RGAS-01, Page 29.56



## Dimensions (mm)

Part No.	d1	d2	Tolerance	B	B1	s	dn
				h10	H10	H10	
TJUM-21-10	10	19	-.0200 /-.0400	29	21.6	1.30	17.5
TJUM-21-12	12	22	-.0200 /-.0400	32	22.6	1.30	20.5
TJUM-21-16	16	26	-.0200 /-.0400	36	24.6	1.30	24.2
TJUM-21-20	20	32	-.0200 /-.0450	45	31.2	1.60	29.6
TJUM-21-25	25	40	-.0300 /-.0550	58	43.7	1.85	36.5
TJUM-21-30	30	47	-.0300 /-.0550	68	51.7	1.85	43.5
TJUM-21-40	40	62	-.0300 /-.0600	80	60.3	2.15	57.8
TJUM-21-50	50	75	-.0300 /-.0600	100	77.3	2.65	70.5

## Load Data

Part No.	Nominal Size	Tolerance* Bearing Inner Diameter	pmax.	pmax.	Weight (g)
			Dynamic Load P = 5 MPa (N)	Static Load P = 35 MPa (N)	
TJUM-21-10	10	.0150 - .0460	725	5075	14
TJUM-21-12	12	.0150 - .0485	960	6720	19
TJUM-21-16	16	.0150 - .0485	1440	10080	27
TJUM-21-20	20	.0150 - .0515	2250	15750	49
TJUM-21-25	25	.0150 - .0515	3625	25375	106
TJUM-21-30	30	.0200 - .0620	5100	35700	166
TJUM-21-40	40	.0200 - .0620	8000	56000	347
TJUM-21-50	50	.0250 - .0730	12500	87500	577

\* according to iglus® testing method ▶ Page 29.57

DryLin® R  
Linear Guide Systems

PDF: [www.igus.com/iglide-pdfs](http://www.igus.com/iglide-pdfs)  
CAD: [www.igus.com/iglide-CAD](http://www.igus.com/iglide-CAD)  
RoHS info: [www.igus.com/RoHS](http://www.igus.com/RoHS)





# DryLin® R Self-Aligning, Split Linear Bearing TJUM-03, mm

DryLin® R  
Linear Guide Systems

Telephone 1-800-521-2747  
1-401-438-7270  
Fax

Internet: <http://www.igus.com>  
email: [sales@igus.com](mailto:sales@igus.com)  
QuickSpec: <http://www.igus.com/iglide-quickspec>

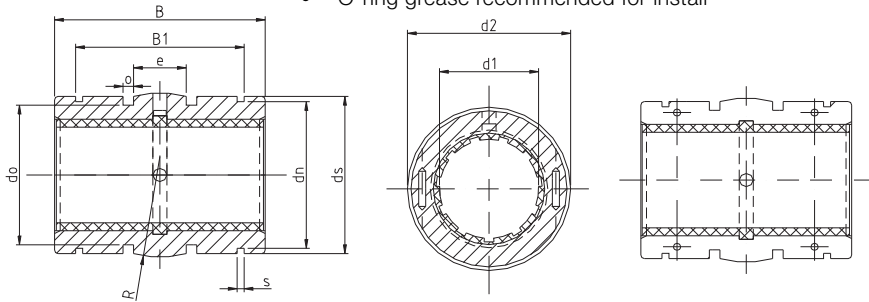


### Special Properties

- Split aluminum adapter with
  - spherical area on the outer diameter for self-alignment purposes
  - O-rings for elastic seating
- Dimensions otherwise equivalent to the standard for recirculating ball bearings
- Equipped with JUM-01 liner made of iglide® J
- Secured by retaining clips according to DIN 471 or 472 (not included in delivery)
- Recommended housing bore H7
- O-ring grease recommended for install

**TJUM-03 Bearings are used in:**

- RQA-01, Page 29.53
- RTA-01, Page 29.54
- RGA-01, Page 29.55
- RGAS-01, Page 29.56



### Housing Bore Dimensions

Nominal Size	METRIC	
	Min.	Max.
8	16.000	16.018
10	19.000	19.021
12	22.000	22.021
16	26.000	26.021
20	32.000	32.025
25	40.000	40.025
30	47.000	47.025
40	62.000	62.030
50	75.000	75.030

### Dimensions (mm)

Part No.	d1	d2	B		s	dn		ds	do	o		e	R
			h10	H10		h10	h10			+0.2	0.4		
TJUM-03-10	10	19 -0.020-0.040	28.9	21.8	1.30	17.5	18.5	15.4	1.86	5.0	13.0		
TJUM-03-12	12	22 -0.020-0.040	31.9	22.8	1.30	20.5	21.5	18.4	1.86	6.0	18.0		
TJUM-03-16	16	26 -0.020-0.040	35.9	24.9	1.30	24.2	25.5	20.4	2.86	8.0	32.0		
TJUM-03-20	20	32 -0.020-0.045	44.8	31.5	1.60	29.6	31.5	26.4	2.86	10.0	50.0		
TJUM-03-25	25	40 -0.030-0.055	57.8	44.1	1.85	36.5	39.5	34.4	2.86	12.5	39.0		
TJUM-03-30	30	47 -0.030-0.055	67.8	52.1	1.85	43.5	46.0	41.4	2.86	15.0	57.0		
TJUM-03-40	40	62 -0.030-0.060	79.8	60.9	2.15	57.8	61.0	56.4	2.86	20.0	100.0		
TJUM-03-50	50	75 -0.030-0.060	99.8	78.0	2.65	70.5	74.0	69.4	2.86	25.0	157.0		

### Load Data

Part No.	Nominal Size	Tolerance* Bearing Inner Diameter	pmax.		Weight (g)
			Dynamic Load P = 5 MPa (N)	Static Load P = 35 MPa (N)	
TJUM-03-10	10	.0300 - .0920	725	5075	11
TJUM-03-12	12	.0300 - .0970	960	6720	17
TJUM-03-16	16	.0300 - .0970	1440	10080	23
TJUM-03-20	20	.0300 - .1030	2250	15750	44
TJUM-03-25	25	.0300 - .1030	3625	25375	92
TJUM-03-30	30	.0400 - .1240	5100	35700	145
TJUM-03-40	40	.0400 - .1240	8000	56000	311
TJUM-03-50	50	.0500 - .1460	12500	87500	542

\* according to iglus® testing method ➤ Page 29.57

# DryLin® R Self-Aligning, Split, Low Clearance Linear Bearing - TJUM-23, mm

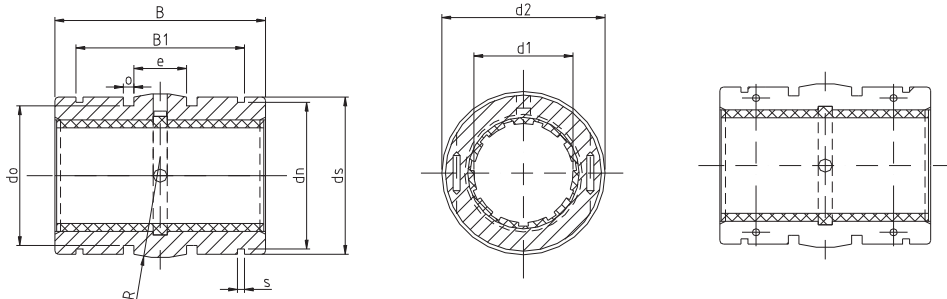


## Special Properties

- Split aluminum adapter with
  - spherical area on the outer diameter for self-alignment purposes
  - O-rings for elastic seating
- Dimensions otherwise equivalent to the standard for recirculating ball bearings
- Equipped with JUM-20 liner made of iglide® J
- Secured by retaining clips according to DIN 471 or 472 (not included in delivery)
- Recommended housing bore H7
- O-ring grease recommended for install

## TJUM-23 Bearings are used in:

- ▶ RQA-01, Page 29.53
- ▶ RTA-01, Page 29.54
- ▶ RGA-01, Page 29.55
- ▶ RGAS-01, Page 29.56



## Dimensions (mm)

Part No.	d1	d2	B h10	B1 H10	s H10	dn h10	ds h10	do +0.2	o 0.4	e	R
TJUM-23-10	10	19 -0.020-0.040	28.9	21.8	1.30	17.5	18.5	15.4	1.86	5.0	13.0
TJUM-23-12	12	22 -0.020-0.040	31.9	22.8	1.30	20.5	21.5	18.4	1.86	6.0	18.0
TJUM-23-16	16	26 -0.020-0.040	35.9	24.9	1.30	24.2	25.5	20.4	2.86	8.0	32.0
TJUM-23-20	20	32 -0.020-0.045	44.8	31.5	1.60	29.6	31.5	26.4	2.86	10.0	50.0
TJUM-23-25	25	40 -0.030-0.055	57.8	44.1	1.85	36.5	39.5	34.4	2.86	12.5	39.0
TJUM-23-30	30	47 -0.030-0.055	67.8	52.1	1.85	43.5	46.0	41.4	2.86	15.0	57.0
TJUM-23-40	40	62 -0.030-0.060	79.8	60.9	2.15	57.8	61.0	56.4	2.86	20.0	100.0
TJUM-23-50	50	75 -0.030-0.060	99.8	78.0	2.65	70.5	74.0	69.4	2.86	25.0	157.0

## Load Data

Part No.	Nominal Size	Tolerance* Bearing Inner Diameter	pmax. Dynamic Load P = 5 MPa (N)	pmax. Static Load P = 35 MPa (N)	Weight (g)
TJUM-23-10	10	.0150 - .0460	725	5075	11
TJUM-23-12	12	.0150 - .0485	960	6720	17
TJUM-23-16	16	.0150 - .0485	1440	10080	23
TJUM-23-20	20	.0150 - .0515	2250	15750	44
TJUM-23-25	25	.0150 - .0515	3625	25375	92
TJUM-23-30	30	.0200 - .0620	5100	35700	145
TJUM-23-40	40	.0200 - .0620	8000	56000	311
TJUM-23-50	50	.0250 - .0730	12500	87500	542

\* according to iglus® testing method ▶ Page 29.57

DryLin® R  
Linear Guide Systems

PDF: [www.igus.com/iglide-pdfs](http://www.igus.com/iglide-pdfs)  
CAD: [www.igus.com/iglide-CAD](http://www.igus.com/iglide-CAD)  
RoHS info: [www.igus.com/RoHS](http://www.igus.com/RoHS)





# DryLin® R Straight, Open Linear Bearing - OJUM-01, mm

DryLin® R  
Linear Guide Systems

Telephone 1-800-521-2747  
1-401-438-7270  
Fax

Internet: <http://www.igus.com>  
email: [sales@igus.com](mailto:sales@igus.com)  
QuickSpec: <http://www.igus.com/iglide-quickspec>

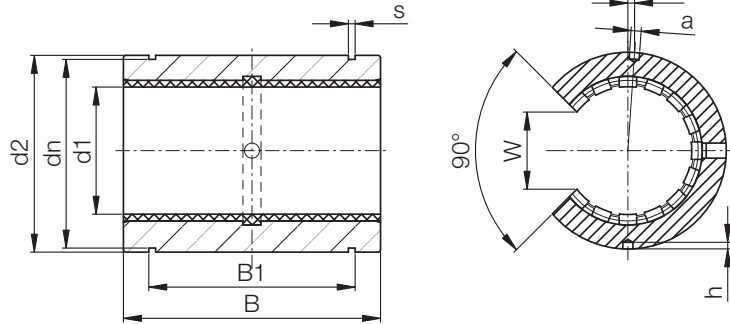


### Special Properties

- Open, anodized aluminum adapter for supported shafts
- Dimensions equivalent to the standard for recirculating ball bearings
- Equipped with JUMO liner made of iglide® J
- Recommended housing bore H7
- Secure the bearing with set screws (not included in the delivery)

**OJUM-01 Bearings are used in:**

- OQA-01, Page 29.53
- OTA-01, Page 29.54
- OGA-01, Page 29.55
- OGAS-01, Page 29.56

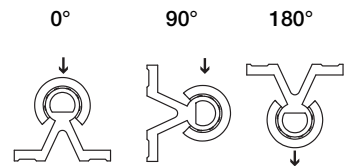


### Housing Bore Dimensions

Nominal Size	METRIC	
	Min.	Max.
8	16.000	16.018
10	19.000	19.021
12	22.000	22.021
16	26.000	26.021
20	32.000	32.025
25	40.000	40.025
30	47.000	47.025
40	62.000	62.030
50	75.000	75.030

### Dimensions (mm)

Part No.	d1	d2	B	W	a	dn	B1	s	f	h
		h7								
OJUM-01-10	10	19	29	7.3	0.0	17.5	21.6	1.30	0	1.2
OJUM-01-12	12	22	32	9.0	3.0	20.5	22.6	1.30	1.33 (7°)	1.2
OJUM-01-16	16	26	36	11.6	2.2	24.2	24.6	1.30	0	1.2
OJUM-01-20	20	32	45	12.0	2.2	29.6	31.2	1.60	0	1.2
OJUM-01-25	25	40	58	14.5	3.0	36.5	43.7	1.85	-1.5 (-4.3°)	1.5
OJUM-01-30	30	47	68	16.6	3.0	43.5	51.7	1.85	2 (4.9°)	2.0
OJUM-01-40	40	62	80	21.0	3.0	57.8	60.3	2.15	1.5 (2.8°)	2.0
OJUM-01-50	50	75	100	25.5	5.0	70.5	77.3	2.65	2.5 (3.8°)	2.0



### Load Data

Part No.	Nominal Size	Tolerance* Bearing Inner Diameter	pmax. Dynamic Load P = 5 MPa (N)			pmax. Static Load P = 35 MPa (N)			Weight (g)
			0°	90°	180°	0°	90°	180°	
			OJUM-01-10	10	.0300 - .0880	725	500	196	
OJUM-01-12	12	.0300 - .0880	960	635	240	6720	4445	1680	15
OJUM-01-16	16	.0300 - .0880	1440	990	396	10080	6943	2772	21
OJUM-01-20	20	.0300 - .0910	2250	1800	900	15750	12600	6300	42
OJUM-01-25	25	.0300 - .0910	3625	2953	1523	25375	20670	10658	70
OJUM-01-30	30	.0400 - .1100	5100	4250	2278	35700	29735	15946	132
OJUM-01-40	40	.0400 - .1150	8000	6810	3800	56000	47660	26660	278
OJUM-01-50	50	.0500 - .1300	12500	10750	6125	87500	75265	42875	479

\* according to iglus® testing method ➤ Page 29.57

# DryLin® R Straight, Open, Low Clearance Linear Bearing - OJUM-21, mm

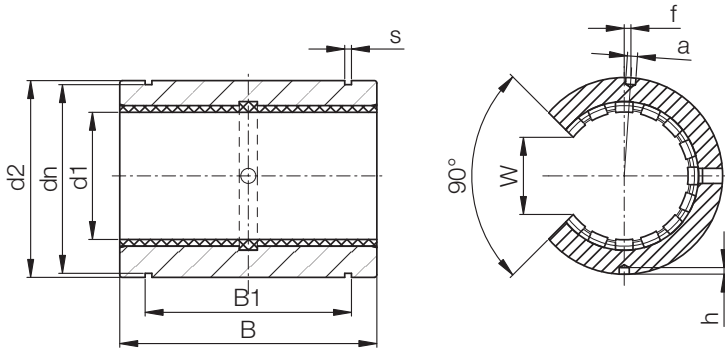


## Special Properties

- Open, anodized aluminum adapter for supported shafts
- Dimensions equivalent to the standard for recirculating ball bearings
- Equipped with JUMO-20 liner made of iglide® J
- Recommended housing bore H7
- Secured the bearing with set screws (not included in the delivery)

## OJUM-21 Bearings are used in:

- ▶ OQA-01, Page 29.53
- ▶ OTA-01, Page 29.54
- ▶ OGA-01, Page 29.55
- ▶ OGAS-01, Page 29.56



## Dimensions (mm)

Part No.	d1	d2 h7	B h10	W	a +0.1	dn h10	B1 H10	s H10	f ±0.2	h -0.5
OJUM-21-10	10	19	29	7.3	0.0	17.5	21.6	1.30	0	1.2
OJUM-21-12	12	22	32	9.0	3.0	20.5	22.6	1.30	1.33 (7°)	1.2
OJUM-21-16	16	26	36	11.6	2.2	24.2	24.6	1.30	0	1.2
OJUM-21-20	20	32	45	12.0	2.2	29.6	31.2	1.60	0	1.2
OJUM-21-25	25	40	58	14.5	3.0	36.5	43.7	1.85	-1.5 (-4.3°)	1.5
OJUM-21-30	30	47	68	16.6	3.0	43.5	51.7	1.85	2 (4.9°)	2.0
OJUM-21-40	40	62	80	21.0	3.0	57.8	60.3	2.15	1.5 (2.8°)	2.0
OJUM-21-50	50	75	100	25.5	5.0	70.5	77.3	2.65	2.5 (3.8°)	2.0

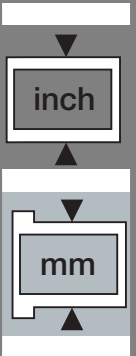
## Load Data

Part No.	Nominal Size	Tolerance* Bearing Inner Diameter	pmax. Dynamic Load P = 5 MPa (N)			pmax. Static Load P = 35 MPa (N)			Weight (g)
			0°	90°	180°	0°	90°	180°	
OJUM-21-10	10	.0150 - .0440	725	500	196	5075	3500	1370	11
OJUM-21-12	12	.0150 - .0440	960	635	240	6720	4445	1680	15
OJUM-21-16	16	.0150 - .0440	1440	990	396	10080	6943	2772	21
OJUM-21-20	20	.0150 - .0455	2250	1800	900	15750	12600	6300	42
OJUM-21-25	25	.0150 - .0455	3625	2953	1523	25375	20670	10658	70
OJUM-21-30	30	.0200 - .0550	5100	4250	2278	35700	29735	15946	132
OJUM-21-40	40	.0200 - .0575	8000	6810	3800	56000	47660	26660	278
OJUM-21-50	50	.0250 - .0650	12500	10750	6125	87500	75265	42875	479

\* according to iglus® testing method ▶ Page 29.57

DryLin® R  
Linear Guide Systems

PDF: [www.igus.com/iglide-pdfs](http://www.igus.com/iglide-pdfs)  
CAD: [www.igus.com/iglide-CAD](http://www.igus.com/iglide-CAD)  
RoHS info: [www.igus.com/RoHS](http://www.igus.com/RoHS)





# DryLin® R Self Aligning, Open Linear Bearing - OJUM-03, mm

DryLin® R  
Linear Guide Systems

Telephone 1-800-521-2747  
1-401-438-7270  
Fax

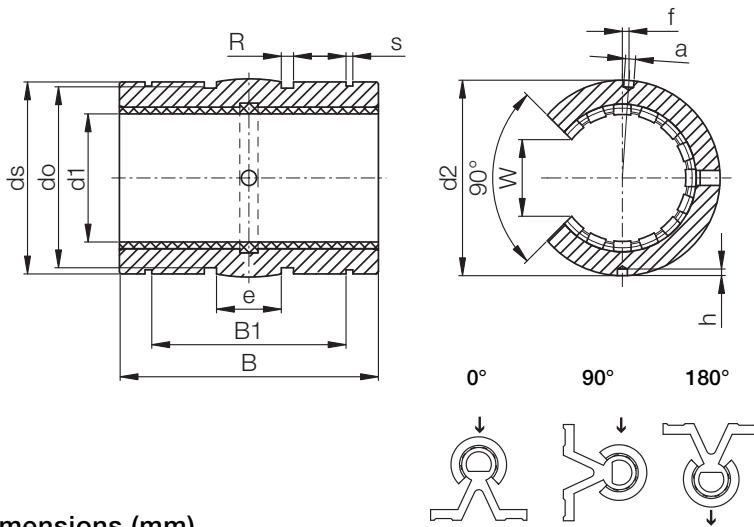
Internet: <http://www.igus.com>  
email: [sales@igus.com](mailto:sales@igus.com)  
QuickSpec: <http://www.igus.com/iglide-quickspec>



### Special Properties

- Open, aluminum adapter with
  - reduced outer diameter
  - spherical area on the outer diameter for automatic alignment compensation
  - O-rings for elastic seating
  - hard-anodized
- Dimensions correspond to the standard for recirculating ball bearings
- Equipped with JUMO liner made of iglide® J
- Recommended housing bore H7
- Attachment by mounting bolts (not included in delivery)

**OJUM-03 Bearings are used in:**  
 ▶ OQA-01, Page 29.53  
 ▶ OTA-01, Page 29.54  
 ▶ OGA-01, Page 29.55  
 ▶ OGAS-01, Page 29.56



### Housing Bore Dimensions

Nominal Size	METRIC	
	Min.	Max.
8	16.000	16.018
10	19.000	19.021
12	22.000	22.021
16	26.000	26.021
20	32.000	32.025
25	40.000	40.025
30	47.000	47.025
40	62.000	62.030
50	75.000	75.030

### Dimensions (mm)

Part No.	d2 h7	ds h10	e	o +0.1	do h10	B1 H10	s H10	B h10	R	W	a +0.1	f ±0.2	h -0.5	a
OJUM-03-10	18.8	18.5	5.0	1.86	15.4	21.8	1.30	28.9	13.0	7.3	0.0	0	1.2	10
OJUM-03-12	21.8	21.5	6.0	1.86	18.4	22.8	1.30	31.9	18.0	9.0	3.0	1.33 (7°)	1.2	12
OJUM-03-16	25.8	25.5	8.0	2.86	20.4	24.9	1.30	35.9	32.0	11.6	2.2	0	1.2	16
OJUM-03-20	31.8	31.5	10.0	2.86	26.4	31.5	1.60	44.8	50.0	12.0	2.2	0	1.2	20
OJUM-03-25	39.8	39.0	12.5	2.86	34.4	44.1	1.85	57.8	39.0	14.5	3.0	-1.5 (-4.3°)	1.5	25
OJUM-03-30	46.7	46.0	15.0	2.86	41.4	52.1	1.85	67.8	57.0	16.6	3.0	2 (4.9°)	2	30
OJUM-03-40	61.7	61.0	20.0	2.86	56.4	60.9	2.15	79.8	100.0	21.0	3.0	1.5 (2.8°)	2	40
OJUM-03-50	74.7	74.0	25.0	2.86	69.4	78.0	2.65	99.8	157.0	25.5	5.0	2.5 (3.8°)	2	50

### Load Data

Part No.	Nominal Size	Housing bore	Tolerance* Bearing Inner Diameter	pmax. Dynamic Load P = 5 MPa (N)			pmax. Static Load P = 35 MPa (N)			Weight (g)
				0°	90°	180°	0°	90°	180°	
				OJUM-03-10	10	19	.0300 - .0880	725	500	
OJUM-03-12	12	22	.0300 - .0880	960	635	240	6720	4445	1680	13
OJUM-03-16	16	26	.0300 - .0880	1440	990	396	10080	6943	2772	19
OJUM-03-20	20	32	.0300 - .0910	2250	1800	900	15750	12600	6300	38
OJUM-03-25	25	40	.0300 - .0910	3625	2953	1523	25375	20670	10658	63
OJUM-03-30	30	47	.0400 - .1100	5100	4250	2278	35700	29735	15946	119
OJUM-03-40	40	62	.0400 - .1150	8000	6810	3800	56000	47660	26660	250
OJUM-03-50	50	75	.0500 - .1300	12500	10750	6125	87500	75265	42875	431

\* according to iglus® testing method ▶ Page 29.57

# DryLin® R Self Aligning, Open, Low Clearance Linear Bearing - OJUM-23, mm

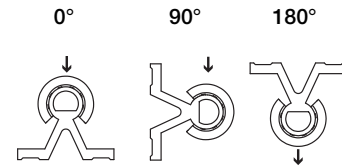
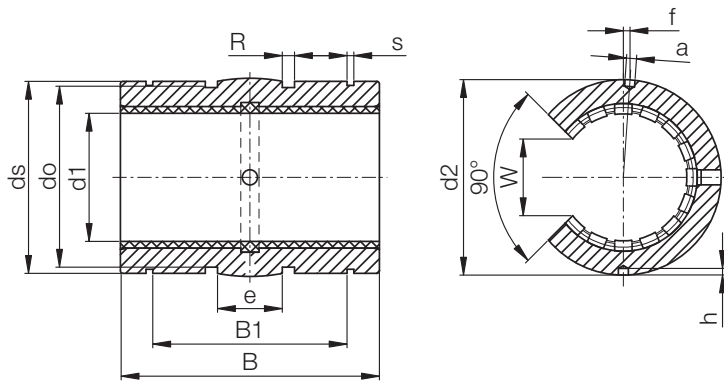


## Special Properties

- Open, aluminum adapter with
  - reduced outer diameter
  - spherical area on the outer diameter for automatic alignment compensation
  - O-rings for elastic seating
  - hard-anodized
- Dimensions correspond to the standard for recirculating ball bearings
- Equipped with JUMO-20 liner made of iglide® J
- Recommended housing bore H7
- O-ring grease recommended for install
- Attachment by mounting bolts (not included in delivery)

### OJUM-23 Bearings are used in:

- ▶ OQA-01, Page 29.55
- ▶ OTA-01, Page 29.56
- ▶ OGA-01, Page 29.57
- ▶ OGAS-01, Page 29.58



## Dimensions (mm)

Part No.	d2 h7	ds h10	e	o +0.1	do h10	B1 H10	s H10	B h10	R	W	a +0.1	f ±0.2	h -0.5	a
OJUM-23-10	18.8	18.5	5.0	1.86	15.4	21.8	1.30	28.9	13.0	7.3	0.0	0	1.2	10
OJUM-23-12	21.8	21.5	6.0	1.86	18.4	22.8	1.30	31.9	18.0	9.0	3.0	1.33 (7°)	1.2	12
OJUM-23-16	25.8	25.5	8.0	2.86	20.4	24.9	1.30	35.9	32.0	11.6	2.2	0	1.2	16
OJUM-23-20	31.8	31.5	10.0	2.86	26.4	31.5	1.60	44.8	50.0	12.0	2.2	0	1.2	20
OJUM-23-25	39.8	39.0	12.5	2.86	34.4	44.1	1.85	57.8	39.0	14.5	3.0	-1.5 (-4.3°)	1.5	25
OJUM-23-30	46.7	46.0	15.0	2.86	41.4	52.1	1.85	67.8	57.0	16.6	3.0	2 (4.9°)	2	30
OJUM-23-40	61.7	61.0	20.0	2.86	56.4	60.9	2.15	79.8	100.0	21.0	3.0	1.5 (2.8°)	2	40
OJUM-23-50	74.7	74.0	25.0	2.86	69.4	78.0	2.65	99.8	157.0	25.5	5.0	2.5 (3.8°)	2	50

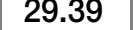
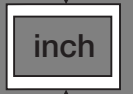
## Load Data

Part No.	Nominal Size	Housing bore	Tolerance* Bearing Inner Diameter	pmax. Dynamic Load P = 5 MPa (N)			pmax. Static Load P = 35 MPa (N)			Weight (g)
				0°	90°	180°	0°	90°	180°	
				OJUM-23-10	10	19	.0150 - .0440	725	500	
OJUM-23-12	12	22	.0150 - .0440	960	635	240	6720	4445	1680	13
OJUM-23-16	16	26	.0150 - .0440	1440	990	396	10080	6943	2772	19
OJUM-23-20	20	32	.0150 - .0455	2250	1800	900	15750	12600	6300	38
OJUM-23-25	25	40	.0150 - .0455	3625	2953	1523	25375	20670	10658	63
OJUM-23-30	30	47	.0200 - .0550	5100	4250	2278	35700	29735	15946	119
OJUM-23-40	40	62	.0200 - .0575	8000	6810	3800	56000	47660	26660	250
OJUM-23-50	50	75	.0250 - .0650	12500	10750	6125	87500	75265	42875	431

\* according to iglus® testing method ▶ Page 29.57

DryLin® R  
Linear Guide Systems

PDF: [www.igus.com/iglide-pdfs](http://www.igus.com/iglide-pdfs)  
CAD: [www.igus.com/iglide-CAD](http://www.igus.com/iglide-CAD)  
RoHS info: [www.igus.com/RoHS](http://www.igus.com/RoHS)

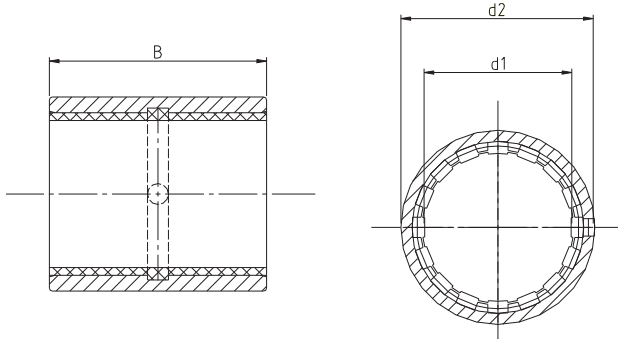






### Special Properties

- Closed, anodized aluminum adapter
- Dimensions equivalent to the standard for recirculating ball bearings
- Equipped with JUM-02 liner made of iglide® J
- Secured by pressfit in a recommended housing bore
- Recommended housing bore H7 for steel housings or K7 for aluminum



## RJUM-02, Standard Clearance

Dimensions (mm)

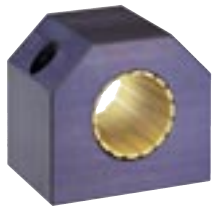
Part No.	Nominal Size	Housing Bore i.d. h7	Tolerance** Bearing i.d.		pmax. Dynamic Load P = 5 MPa (N)	pmax. Static Load P = 35 MPa (N)	Weight (g)	d1	d2 k7	B h10
			Min.	Max.						
RJZM-02-08*	8	15	.0320	-.0700	650	4550	6	8	15	24
RJUM-02-10	10	17	.0300	-.0880	650	4550	8	10	17	26
RJUM-02-12	12	19	.0300	-.0880	840	5880	10	12	19	28
RJUM-02-16	16	24	.0300	-.0880	1200	8400	17	16	24	30
RJUM-02-20	20	28	.0300	-.0910	1500	10500	18	20	28	30
RJUM-02-25	25	35	.0300	-.0910	2500	17500	42	25	35	40
RJUM-02-30	30	40	.0400	-.1100	3750	26250	56	30	40	50
RJUM-02-40	40	52	.0400	-.1150	6000	42000	113	40	52	60
RJUM-02-50	50	60	.0500	-.1300	8750	61250	147	50	60	70

## RJUM-22, Low Clearance

Dimensions (mm)

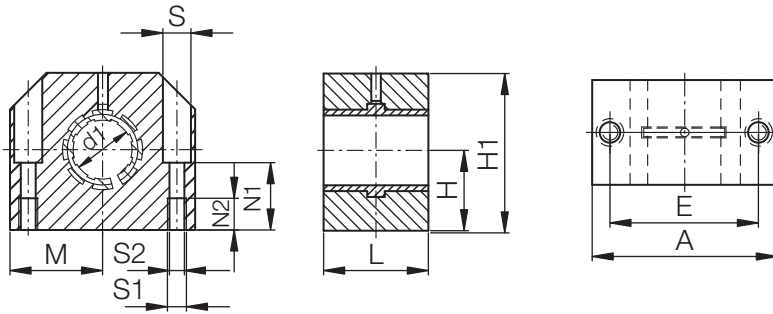
Part No.	Nominal Size	Housing Bore i.d.	Tolerance** Bearing i.d.		pmax. Dynamic Load P = 5 MPa (N)	pmax. Static Load P = 35 MPa (N)	Weight (g)	d1	d2 k7	B h10
			Min.	Max.						
RJZM-02-08*	8	15	.0160	-.0350	215	1510	6	8	15	24
RJUM-22-10	10	17	.0150	-.0440	146	1022	8	10	17	26
RJUM-22-12	12	19	.0150	-.0440	188	1321	10	12	19	28
RJUM-22-16	16	24	.0150	-.0440	269	1888	17	16	24	30
RJUM-22-20	20	28	.0150	-.0455	337	2360	18	20	28	30
RJUM-22-25	25	35	.0150	-.0455	562	3934	42	25	35	40
RJUM-22-30	30	40	.0200	-.0550	843	5901	56	30	40	50
RJUM-22-40	40	52	.0200	-.0575	1348	9441	113	40	52	60
RJUM-22-50	50	60	.0250	-.0650	1967	13769	147	50	60	70

# DryLin® R Closed Pillow Block, Short Design Linear Bearing RJUM-05, mm



## Special Properties

- Closed, anodized aluminum housing, short design
- Contains JUM-02-XX liner



## Dimensions (mm)

Part No.	d1	H +0.01 -0.014	H1	A	M	E ±0.15	S	S1	S2	N1	N2	L
RJUM- <input type="text"/> -10	10	16	33	40	20.0	29	8.0	M 5	4.3	16	11	26
RJUM- <input type="text"/> -12	12	17	33	40	20.0	29	8.0	M 5	4.3	16	11	28
RJUM- <input type="text"/> -16	16	19	38	45	22.5	34	8.0	M 5	4.3	18	11	30
RJUM- <input type="text"/> -20	20	23	45	53	26.5	40	9.5	M 6	5.3	22	13	30
RJUM- <input type="text"/> -25	25	27	54	62	31.0	48	11.0	M 8	6.6	26	18	40
RJUM- <input type="text"/> -30	30	30	60	67	33.5	53	11.0	M 8	6.6	29	18	50
RJUM- <input type="text"/> -40	40	39	76	87	43.5	69	15.0	M10	8.4	38	22	60
RJUM- <input type="text"/> -50	50	47	92	103	51.5	82	18.0	M12	10.5	46	26	70

Supplement the part number with one of the following choices.  
Example: RJUM-05-10 for a standard version

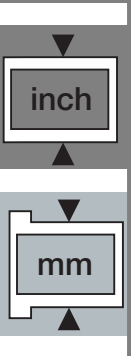
For Standard version use 05 (See page 27.24)

For Low Clearance version use 35 (See page 27.24)

## Load Data

Part No.	Nominal Size	Tolerance* Bearing Inner Diameter	pmax. Dynamic Load P = 5 MPa (N)	pmax. Static Load P = 35 MPa (N)	Weight (g)
RJUM- <input type="text"/> XX-10	10	.0300 - .0880	650	4550	71
RJUM- <input type="text"/> XX-12	12	.0300 - .0880	840	5880	78
RJUM- <input type="text"/> XX-16	16	.0300 - .0880	1200	8400	106
RJUM- <input type="text"/> XX-20	20	.0300 - .0910	1500	10500	132
RJUM- <input type="text"/> XX-25	25	.0300 - .0910	2500	17500	253
RJUM- <input type="text"/> XX-30	30	.0400 - .1100	3750	26250	374
RJUM- <input type="text"/> XX-40	40	.0400 - .1150	6000	42000	713
RJUM- <input type="text"/> XX-50	50	.0500 - .1300	8750	61250	1.168

\* according to iglus® testing method ▶ Page 29.57



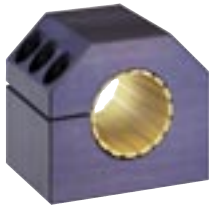


# DryLin® R Adjustable Pillow Block, Short Design Linear Bearing RJUME-05, mm

DryLin® R  
Linear Guide Systems

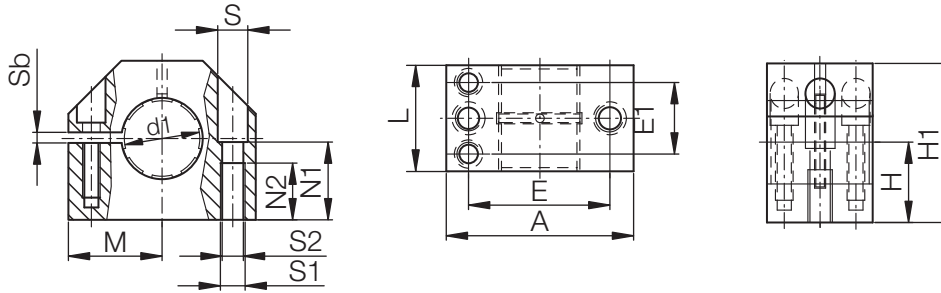
Telephone 1-800-521-2747  
Fax 1-401-438-7270

Internet: <http://www.igus.com>  
email: [sales@igus.com](mailto:sales@igus.com)  
QuickSpec: <http://www.igus.com/iglide-quickspec>



### Special Properties

- Adjustable, anodized aluminum housing, short design
- Contains JUM-02-XX liner
- With adjustable clearance for shaft dimensions 12 to 40 mm



### Dimensions (mm)

Part No.	d1	H +0.01 -0.014	H1	A	M	E ±0.15	E1 ±0.15	S	S1	S2	Sb	N1	N2	L
RJUME- <input type="text"/> -12	12	17	33	40	20.0	29	18.0	8.0	4.3	M 5	2	16	11	28
RJUME- <input type="text"/> -16	16	19	38	45	22.5	34	19.0	8.0	4.3	M 5	2	18	11	30
RJUME- <input type="text"/> -20	20	23	45	53	26.5	40	20.0	9.5	5.3	M 6	2	22	13	30
RJUME- <input type="text"/> -25	25	27	54	62	31.0	48	25.5	11.0	6.6	M 8	2	26	18	40
RJUME- <input type="text"/> -30	30	30	60	67	33.5	53	30.5	11.0	6.6	M 8	2	29	18	50
RJUME- <input type="text"/> -40	40	39	76	87	43.5	69	36.0	15.0	8.4	M10	2	38	22	60

Supplement the part number with one of the following choices.

Example: RJUME--12 for a standard version

For Standard version use  (See page 27.24)

For Low Clearance version use  (See page 27.24)

### Load Data

Part No.	Nominal Size	Tolerance Bearing Inner Diameter	pmax. Dynamic Load P = 5 MPa (N)	pmax. Static Load P = 35 MPa (N)	Weight (g)
RJUME- <input type="text"/> -12	12	adjustable	840	5880	78
RJUME- <input type="text"/> -16	16	adjustable	1200	8400	106
RJUME- <input type="text"/> -20	20	adjustable	1500	10500	132
RJUME- <input type="text"/> -25	25	adjustable	2500	17500	253
RJUME- <input type="text"/> -30	30	adjustable	3750	26250	374
RJUME- <input type="text"/> -40	40	adjustable	6000	42000	713

# DryLin® R Closed Pillow Block, Long Design Linear Bearing RJUM-06, mm



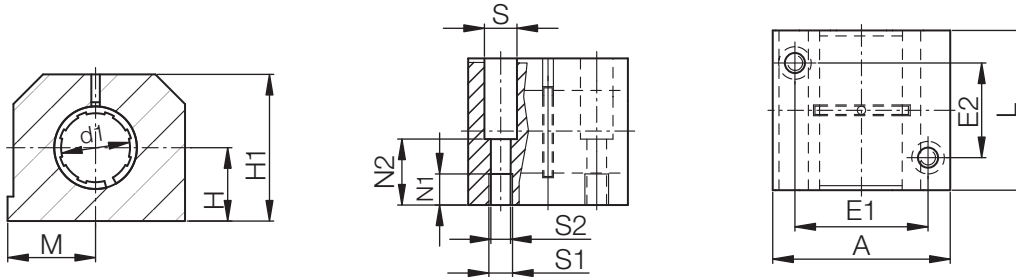
DryLin® R  
Linear Guide Systems

PDF: [www.igus.com/iglide-pdfs](http://www.igus.com/iglide-pdfs)  
CAD: [www.igus.com/iglide-CAD](http://www.igus.com/iglide-CAD)  
RoHS info: [www.igus.com/RoHS](http://www.igus.com/RoHS)



## Special Properties

- Closed, anodized aluminum housing, long design
- Contains JUM-01-XX liner



## Dimensions (mm)

Part No.	d1	H +0.01 -0.014	H1	A	M	E1 ±0.15	E2 ±0.15	S	S1	S2	N1	N2	L
RJUM- <input type="text"/> -12	12	18	35	43	21.5	32	23	8.0	M 5	4.3	16.5	11	39
RJUM- <input type="text"/> -16	16	22	42	53	26.5	40	26	10.0	M 6	5.3	21.0	13	43
RJUM- <input type="text"/> -20	20	25	50	60	30.0	45	32	11.0	M 8	6.6	24.0	18	54
RJUM- <input type="text"/> -25	25	30	60	78	39.0	60	40	15.0	M10	8.4	29.0	22	67
RJUM- <input type="text"/> -30	30	35	70	87	43.5	68	45	15.0	M10	8.4	34.0	22	79
RJUM- <input type="text"/> -40	40	45	90	108	54.0	86	58	18.0	M12	10.5	44.0	26	91
RJUM- <input type="text"/> -50	50	50	105	132	66.0	108	50	20.0	M16	13.5	49.0	34	113

Supplement the part number with one of the following choices.  
Example: RJUM-06-12 for a standard version

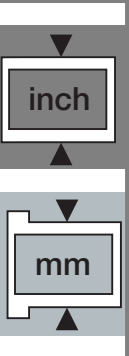
For Standard version use 06 (See page 27.24)

For Low Clearance version use 36 (See page 27.24)

## Load Data

Part No.	Nominal Size	Tolerance* Bearing Inner Diameter	pmax. Dynamic Load P = 5 MPa (N)	pmax. Static Load P = 35 MPa (N)	Weight (kg)
RJUM- <input type="text"/> XX <input type="text"/> -12	12	.0300 - .0880	960	6720	0.121
RJUM- <input type="text"/> XX <input type="text"/> -16	16	.0300 - .0880	1440	10080	0.211
RJUM- <input type="text"/> XX <input type="text"/> -20	20	.0300 - .0910	2250	15750	0.323
RJUM- <input type="text"/> XX <input type="text"/> -25	25	.0300 - .0910	3625	25375	0.651
RJUM- <input type="text"/> XX <input type="text"/> -30	30	.0400 - .1100	5100	35700	1.050
RJUM- <input type="text"/> XX <input type="text"/> -40	40	.0400 - .1150	8000	56000	1.820
RJUM- <input type="text"/> XX <input type="text"/> -50	50	.0500 - .1300	12500	87500	3.250

\* according to iglus® testing method ➤ Page 29.57





# DryLin® R Floating Pillow Block RJUM-06 LL, mm

DryLin® R  
Linear Guide Systems

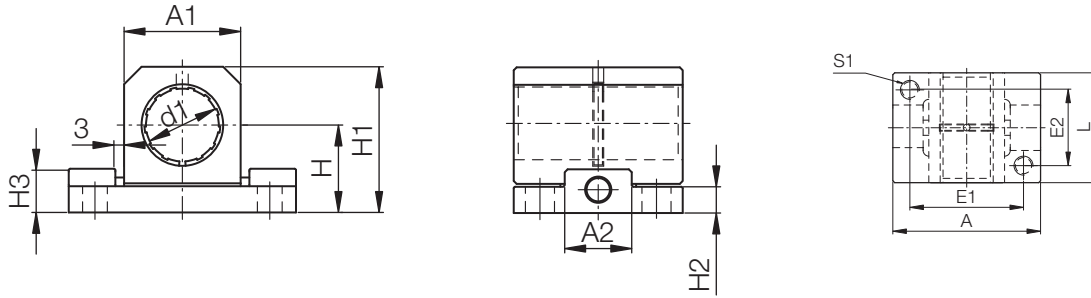
Telephone 1-800-521-2747  
Fax 1-401-438-7270

Internet: <http://www.igus.com>  
email: [sales@igus.com](mailto:sales@igus.com)  
QuickSpec: <http://www.igus.com/iglide-quickspec>



### Special Properties

- For extreme misalignments
- Closed, anodized aluminum housing, long design
- Contains JUM-01-XX liner
- Compensation of angle errors +/- 3.5°
- Same properties as standard pillow block
- Compensation of parallelism errors up to 6mm
- Compensates for angular errors and bending of the shaft



### Dimensions (mm)

Part No.	d1	H	H1	A	E1 ±0.15	E2 ±0.15	S1	L	A1	A2	H2	H3
RJUM- <input type="text"/> -12 LL	12	18	28	43	32	23	M 5	39	20	13	6	11
RJUM- <input type="text"/> -16 LL	16	22	35	53	40	26	M 6	43	26	15	7	11
RJUM- <input type="text"/> -20 LL	20	25	41	60	45	32	M 8	54	32	19	7	12.5
RJUM- <input type="text"/> -25 LL	25	30	50	78	60	40	M 10	67	40	23	9	15
RJUM- <input type="text"/> -30 LL	30	35	59	87	68	45	M 10	79	48	28	10	15

Supplement the part number with one of the following choices.  
Example: RJUM--12 LL for a standard floating version

For Standard floating version use  (See page 27.24)

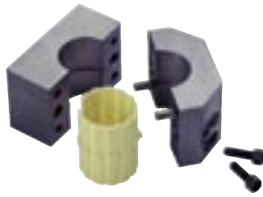
For Low Clearance floating version use  (See page 27.24)

### Load Data

Part No.	Nominal Size	Tolerance* Bearing Inner Diameter	pmax. (N)	Weight (kg)
RJUM- <input type="text"/> -12 LL	12	.0300 - .0880	560	0.050
RJUM- <input type="text"/> -16 LL	16	.0300 - .0880	920	0.080
RJUM- <input type="text"/> -20 LL	20	.0300 - .0910	2100	0.130
RJUM- <input type="text"/> -25 LL	25	.0300 - .0910	3550	0.280
RJUM- <input type="text"/> -30 LL	30	.0400 - .1100	5300	0.430

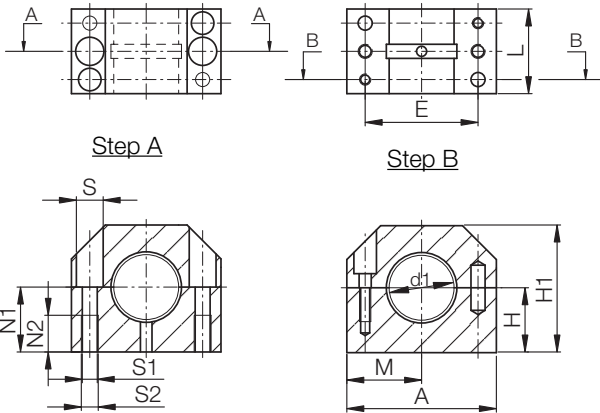
\* according to iglus® testing method ▶ Page 29.57

# DryLin® R Split Pillow Block TJUM-05, mm



## Special Properties

- Split, anodized aluminum housing, bolted
- Contains JUM-02-XX liner
- Replacement of the liner without disassembling the shaft



## Dimensions (mm)

Part No.	d1	H ±0.02	H1	A	M	E ±0.15	S	S1	S2	N1	N2	L
TJUM- <input type="text"/> -16	16	19	38	45	22.5	34	8.0	M 5	4.3	18	11	30
TJUM- <input type="text"/> -20	20	23	45	53	26.5	40	9.5	M 6	5.3	22	13	30
TJUM- <input type="text"/> -25	25	27	54	62	31.0	48	11.0	M 8	6.6	26	18	40
TJUM- <input type="text"/> -30	30	30	60	67	33.5	53	11.0	M 8	6.6	29	18	50
TJUM- <input type="text"/> -40	40	39	76	87	43.5	69	15.0	M10	8.4	38	22	60

Supplement the part number with one of the following choices.  
Example: TJUM-05-16 for a standard version

For Standard version use 05 (See page 27.24)

For Low Clearance version use 35 (See page 27.24)

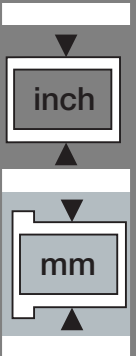
## Load Data

Part No.	Nominal Size	Tolerance Bearing Inner Diameter	pmax. Dynamic Load P = 5 MPa (N)	pmax. Static Load P = 35 MPa (N)	Weight (g)
TJUM- <input type="text"/> XX-16	16	.0300-.1200	1200	8400	105
TJUM- <input type="text"/> XX-20	20	.0300-.1200	1500	10500	137
TJUM- <input type="text"/> XX-25	25	.0300-.1200	2500	17500	253
TJUM- <input type="text"/> XX-30	30	.0400-.1350	3750	26250	377
TJUM- <input type="text"/> XX-40	40	.0400-.1350	6000	42000	720

\* according to iglus® testing method ► Page 29.57

DryLin® R  
Linear Guide Systems

PDF: [www.igus.com/iglide-pdfs](http://www.igus.com/iglide-pdfs)  
CAD: [www.igus.com/iglide-CAD](http://www.igus.com/iglide-CAD)  
RoHS info: [www.igus.com/RoHS](http://www.igus.com/RoHS)





# DryLin® R Open Pillow Block, Long Design Linear Bearing OJUM-06, mm

DryLin® R  
Linear Guide Systems

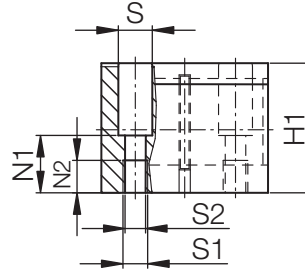
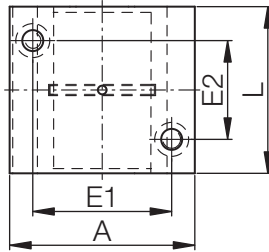
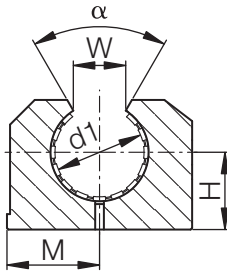
Telephone 1-800-521-2747  
Fax 1-401-438-7270

Internet: <http://www.igus.com>  
email: [sales@igus.com](mailto:sales@igus.com)  
QuickSpec: <http://www.igus.com/iglide-quickspec>



### Special Properties

- Open, anodized aluminum housing, long design
- Contains JUMO-01-XX liner



### Dimensions (mm)

Part No.	d1	H +0.01	H1	A	M	E ±0.15	E2 ±0.15	S	S1	S2	N1	N2	W	α (°)	L
OJUM-□-12	12	18	28	43	21.5	32	23	8.0	M 5	4.3	16.5	11	10.2	78	39
OJUM-□-16	16	22	35	53	26.5	40	26	10.0	M 6	5.3	21.0	13	11.6	78	43
OJUM-□-20	20	25	42	60	30.0	45	32	11.0	M 8	6.6	24.0	18	12.0	60	54
OJUM-□-25	25	30	51	78	39.0	60	40	15.0	M10	8.4	29.0	22	14.5	60	67
OJUM-□-30	30	35	60	87	43.5	68	45	15.0	M10	8.4	34.0	22	16.6	57	79
OJUM-□-40	40	45	77	108	54.0	86	58	18.0	M12	10.5	44.0	26	21.0	56	91
OJUM-□-50	50	50	88	132	66.0	108	50	20.0	M16	13.5	49.0	34	25.5	54	113

Supplement the part number with one of the following choices.  
Example: OJUM-□06-12 for a standard version

For Standard version use □06 (See page 27.25)

For Low Clearance version use □36 (See page 27.25)

### Load Data

Part No.	Nominal Size	Tolerance* Bearing Inner Diameter	pmax. Dynamic Load P = 5 MPa (N)			pmax. Static Load P = 35 MPa (N)			Weight (kg)
			0°	90°	180°	0°	90°	180°	
			OJUM-□XX-12	12	.0300 - .0880	960	635	240	
OJUM-□XX-16	16	.0300 - .0880	1440	990	396	10080	6943	2772	0.158
OJUM-□XX-20	20	.0300 - .0910	2250	1800	900	15750	12600	6300	0.266
OJUM-□XX-25	25	.0300 - .0910	3625	2953	1523	25375	20670	10658	0.530
OJUM-□XX-30	30	.0400 - .1100	5100	4250	2278	35700	29735	15946	0.818
OJUM-□XX-40	40	.0400 - .1150	8000	6810	3800	56000	47660	26660	1.485
OJUM-□XX-50	50	.0500 - .1300	12500	10750	6125	87500	75265	42875	2.750

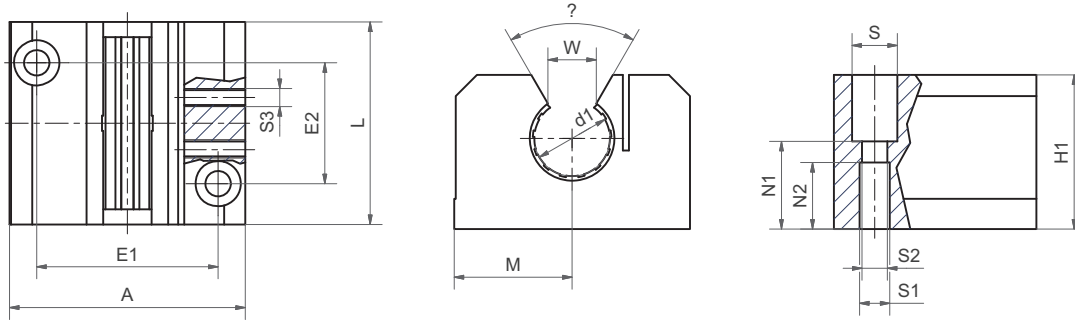
\* according to iglus® testing method ▶ Page 29.57

# DryLin® R Adjustable Pillow Block, Long Design Linear Bearing OJUME-06, mm



## Special Properties

- Open, anodized aluminum housing, standard
- Contains JUMO-01-XX liner made of iglide® J is fitted as standard
- Adjustable clearance: with 2 set screws (DIN 913) one side of the block can be adjusted
- Recommended tolerance for the shaft: h6-h10 (see iglus® supported shafts Page 29.61)
- Also available with the following liners:  
TUMO-01: for high temperatures up to 356°F, material iglide® T500 - Example: OTUM-06-16  
JUMO-11: with reduced maximum clearance, material iglide® J - Example: OJUM-20-16



## Dimensions (mm)

Part No.	d1	H +0.01	H1	A	M	E ±0.15	E2 ±0.15	S	S1	S2	N1	N2	W	α (°)	L
OJUME- <input type="text"/> -12	12	18	28	43	21.5	32	23	8.0	M 5	4.3	16.5	11	10.2	78	39
OJUME- <input type="text"/> -16	16	22	35	53	26.5	40	26	10.0	M 6	5.3	21.0	13	11.6	78	43
OJUME- <input type="text"/> -20	20	25	42	60	30.0	45	32	11.0	M 8	6.6	24.0	18	12.0	60	54
OJUME- <input type="text"/> -25	25	30	51	78	39.0	60	40	15.0	M10	8.4	29.0	22	14.5	60	67
OJUME- <input type="text"/> -30	30	35	60	87	43.5	68	45	15.0	M10	8.4	34.0	22	16.6	57	79
OJUME- <input type="text"/> -40	40	45	77	108	54.0	86	58	18.0	M12	10.5	44.0	26	21.0	56	91
OJUME- <input type="text"/> -50	50	50	88	132	66.0	108	50	20.0	M16	13.5	49.0	34	25.5	54	113

Supplement the part number with one of the following choices.  
Example: OJUME--12 for a standard version

For Standard version use  (See page 27.25)

For Low Clearance version use  (See page 27.25)

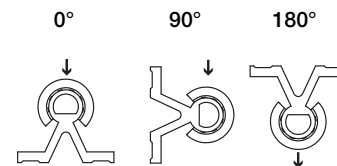
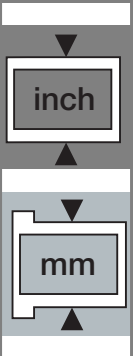
## Load Data

Part No.	Nominal Size	Tolerance* Bearing Inner Diameter	pmax. Dynamic Load P = 5 MPa (N)			pmax. Static Load P = 35 MPa (N)			Weight (kg)
			0°	90°	180°	0°	90°	180°	
OJUME- <input type="text"/> -12	12	.0300 - .0880	960	635	240	6720	4445	1680	0.095
OJUME- <input type="text"/> -16	16	.0300 - .0880	1440	990	396	10080	6943	2772	0.158
OJUME- <input type="text"/> -20	20	.0300 - .0910	2250	1800	900	15750	12600	6300	0.266
OJUME- <input type="text"/> -25	25	.0300 - .0910	3625	2953	1523	25375	20670	10658	0.530
OJUME- <input type="text"/> -30	30	.0400 - .1100	5100	4250	2278	35700	29735	15946	0.818
OJUME- <input type="text"/> -40	40	.0400 - .1150	8000	6810	3800	56000	47660	26660	1.485
OJUME- <input type="text"/> -50	50	.0500 - .1300	12500	10750	6125	87500	75265	42875	2.750

\* according to iglus® testing method ▶ Page 29.57

DryLin® R  
Linear Guide Systems

PDF: [www.igus.com/iglide-pdfs](http://www.igus.com/iglide-pdfs)  
CAD: [www.igus.com/iglide-CAD](http://www.igus.com/iglide-CAD)  
RoHS info: [www.igus.com/RoHS](http://www.igus.com/RoHS)







# DryLin® R Open Floating Pillow Block, Long Design Linear Bearing OJUM-06 LL, mm

DryLin® R  
Linear Guide Systems

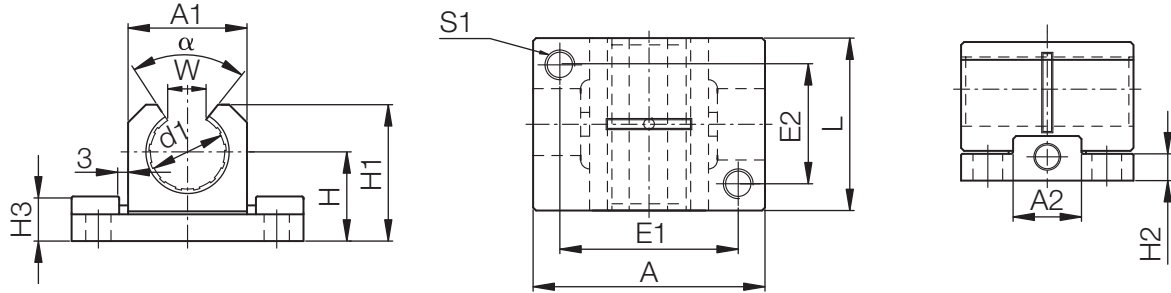
Telephone 1-800-521-2747  
Fax 1-401-438-7270

Internet: <http://www.igus.com>  
email: [sales@igus.com](mailto:sales@igus.com)  
QuickSpec: <http://www.igus.com/iglide-quickspec>



## Special Properties

- For extreme misalignments
- Closed, anodized aluminum housing, long design
- Contains JUM-01-XX liner
- Compensation of angle errors +/- 3.5°
- Same properties as standard pillow block
- Compensation of parallelism errors up to 6mm
- Compensates for angular errors and bending of the shaft



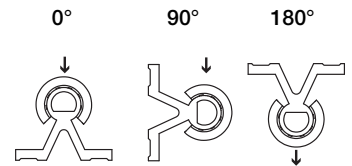
## Dimensions (mm)

Part No.	d1	H	H1	A	E1 ±0.15	E2 ±0.15	S1	L	A1	A2	H2	H3	W	α [°]
OJUM- <input type="text"/> -12 LL	12	18	24.5	43	32	23	M 5	39	20	13	6	11	10.2	90
OJUM- <input type="text"/> -16 LL	16	22	30.5	53	40	26	M 6	43	26	15	7	11	11.6	90
OJUM- <input type="text"/> -20 LL	20	25	37	60	45	32	M 8	54	32	19	7	12.5	12	60
OJUM- <input type="text"/> -25 LL	25	30	44	78	60	40	M10	67	40	23	9	15	14.5	60
OJUM- <input type="text"/> -30 LL	30	35	52.5	87	68	45	M10	79	48	28	10	15	16.8	60

Supplement the part number with one of the following choices.  
Example: OJUM--10 for a standard version

For Standard version use  (See page 27.25)

For Low Clearance version use  (See page 27.25)



## Load Data

Part No.	Nominal Size	Tolerance* Bearing Inner Diameter	pmax. (N) at 0°	pmax. (N) at 90°	pmax. (N) at 180°	Weight [kg]
OJUM- <input type="text"/> -12 LL	12	.0300 - .0880	560	NA	240	0.040
OJUM- <input type="text"/> -16 LL	16	.0300 - .0880	920	NA	400	0.070
OJUM- <input type="text"/> -20 LL	20	.0300 - .0910	2100	NA	900	0.115
OJUM- <input type="text"/> -25 LL	25	.0300 - .0910	3550	NA	1520	0.240
OJUM- <input type="text"/> -30 LL	30	.0400 - .1100	5300	NA	2280	0.370

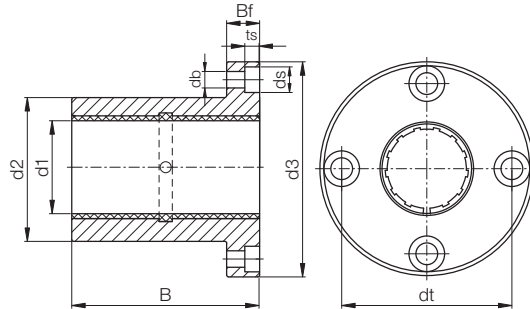
\* according to iglus® testing method ▶ Page 29.57

# DryLin® R Flange Pillow Block, Round Design FJUM-01, mm



## Special Properties

- Flange housing made of anodized aluminum, round flange
- Contains JUM-01-XX liner



## Dimensions (mm)

Part No.	d1	d2 h7	dt	d3	B	Bf	ts	db	ds
FJZM- <input type="text"/> -08*	8	16	24	32	25	8	3.1	3.5	6.0
FJUM- <input type="text"/> -10	10	19	29	39	29	9	4.1	4.5	7.5
FJUM- <input type="text"/> -12	12	22	32	42	32	9	4.1	4.5	7.5
FJUM- <input type="text"/> -16	16	26	36	46	36	9	4.1	4.5	7.5
FJUM- <input type="text"/> -20	20	32	43	54	45	11	5.1	5.5	9.0
FJUM- <input type="text"/> -25	25	40	51	62	58	11	5.1	5.5	9.0
FJUM- <input type="text"/> -30	30	47	62	76	68	14	6.1	6.6	11.0
FJUM- <input type="text"/> -40	40	62	80	98	80	18	8.1	9.0	14.0
FJUM- <input type="text"/> -50	50	75	94	112	100	18	8.1	9.0	15.0

Supplement the part number with one of the following choices.  
Example: FJUM-01-10 for a standard version

For Standard version use 01 (See page 27.24)

For Low Clearance version use 31 (See page 27.24)

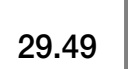
## Load Data

Part No.	Nominal Size	Tolerance** Bearing Inner Diameter	pmax. Dynamic Load	pmax. Static Load	Weight (g)
			P = 5 MPa (N)	P = 35 MPa (N)	
FJZM- <input type="text"/> XX-08*	8	.0320 - .0700	960	6720	20
FJUM- <input type="text"/> XX-10	10	.0300 - .0880	725	5075	32
FJUM- <input type="text"/> XX-12	12	.0300 - .0880	960	6720	42
FJUM- <input type="text"/> XX-16	16	.0300 - .0880	1440	10080	51
FJUM- <input type="text"/> XX-20	20	.0300 - .0910	2250	15750	88
FJUM- <input type="text"/> XX-25	25	.0300 - .0910	3625	25375	152
FJUM- <input type="text"/> XX-30	30	.0400 - .1100	5100	35700	266
FJUM- <input type="text"/> XX-40	40	.0400 - .1150	8000	56000	552
FJUM- <input type="text"/> XX-50	50	.0500 - .1300	12500	87500	853

\* Nominal widths under 10mm are delivered with pressfit sleeve bearings

\* according to iglus® testing method ▶ Page 29.57

PDF: [www.igus.com/iglide-pdfs](http://www.igus.com/iglide-pdfs)  
 CAD: [www.igus.com/iglide-CAD](http://www.igus.com/iglide-CAD)  
 RoHS info: [www.igus.com/RoHS](http://www.igus.com/RoHS)





# DryLin® R Flange Pillow Block, Square Design FJUM-02, mm

DryLin® R  
Linear Guide Systems

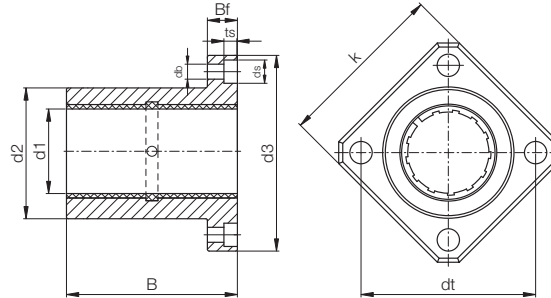
Telephone 1-800-521-2747  
Fax 1-401-438-7270

Internet: <http://www.igus.com>  
email: [sales@igus.com](mailto:sales@igus.com)  
QuickSpec: <http://www.igus.com/iglide-quickspec>



### Special Properties

- Flange housing made of anodized aluminum, square flange
- Contains JUM-01-XX liner



### Dimensions (mm)

Part No.	d1	d2 h7	d3	dt	k	B	Bf	ts	db	ds
FJZM- <input type="text"/> -08*	8	16	32	24	25	25	8	3.1	3.5	6.0
FJUM- <input type="text"/> -10	10	19	39	29	30	29	9	4.1	4.5	7.5
FJUM- <input type="text"/> -12	12	22	42	32	32	32	9	4.1	4.5	7.5
FJUM- <input type="text"/> -16	16	26	46	36	35	36	9	4.1	4.5	7.5
FJUM- <input type="text"/> -20	20	32	54	43	42	45	11	5.1	5.5	9.0
FJUM- <input type="text"/> -25	25	40	62	51	50	58	11	5.1	5.5	9.0
FJUM- <input type="text"/> -30	30	47	76	62	60	68	14	6.1	6.6	11.0
FJUM- <input type="text"/> -40	40	62	98	80	75	80	18	8.1	9.0	15.0
FJUM- <input type="text"/> -50	50	75	112	94	88	100	18	8.1	9.0	14.0

Supplement the part number with one of the following choices.  
Example: FJUM-0210 for a standard version

For Standard version use 02 (See page 27.24)

For Low Clearance version use 32 (See page 27.24)

### Load Data

Part No.	Nominal Size	Tolerance** Bearing Inner Diameter	pmax. Dynamic Load P = 5 MPa	pmax. Static Load P = 35 MPa	Weight (g)
FJZM- <input type="text"/> XX <input type="text"/> -08*	8	.0320 - .0700	960	6720	17
FJUM- <input type="text"/> XX <input type="text"/> -10	10	.0300 - .0880	725	5075	25
FJUM- <input type="text"/> XX <input type="text"/> -12	12	.0300 - .0880	960	6720	32
FJUM- <input type="text"/> XX <input type="text"/> -16	16	.0300 - .0880	1440	10080	41
FJUM- <input type="text"/> XX <input type="text"/> -20	20	.0300 - .0910	2250	15750	73
FJUM- <input type="text"/> XX <input type="text"/> -25	25	.0300 - .0910	3625	25375	135
FJUM- <input type="text"/> XX <input type="text"/> -30	30	.0300 - .1100	5100	35700	228
FJUM- <input type="text"/> XX <input type="text"/> -40	40	.0300 - .1150	8000	56000	454
FJUM- <input type="text"/> XX <input type="text"/> -50	50	.0300 - .1300	12500	87500	735

\* Nominal widths under 10mm are delivered with pressfit sleeve bearings

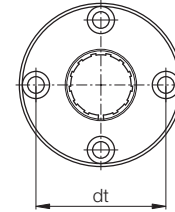
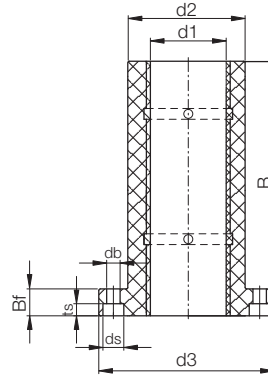
\* according to igus® testing method ➤ Page 29.57

# DryLin® R Twin Flange Pillow Block Round Design FJUMT-01, mm



## Special Properties

- Flange housing made of anodized aluminum, round flange
- Contains 2 of the JUM-02-XX liners



## Dimensions (mm)

Part No.	d1	d2 h7	d3	dt	k	B	Bf	ts	db	ds
FJUMT-01-08*	8	16	32	24	25	45	8	3.1	3.5	6.0
FJUMT-01-10	10	19	39	29	30	52	9	4.1	4.5	7.5
FJUMT-01-12	12	22	42	32	32	57	9	4.1	4.5	7.5
FJUMT-01-16	16	26	46	36	35	70	9	4.1	4.5	7.5
FJUMT-01-20	20	32	54	43	42	80	11	5.1	5.5	9.0
FJUMT-01-25	25	40	62	51	50	112	11	5.1	5.5	9.0
FJUMT-01-30	30	47	76	62	60	123	14	6.1	6.6	11.0
FJUMT-01-40	40	62	98	80	75	151	18	8.1	9.0	14.0
FJUMT-01-50	50	75	112	94	88	192	18	8.1	9.0	14.0

Part No.	Nominal Size	Tolerance** Bearing Inner Diameter	pmax. Dynamic Load	pmax. Static Load
			P = 5 MPa (N)	P = 35 MPa (N)
FJZMT-01-08*	8	.0320 - .0700	1913	13430
FJUMT-01-10	10	.0300 - .0880	1450	10150
FJUMT-01-12	12	.0300 - .0880	1913	13430
FJUMT-01-16	16	.0300 - .0880	2874	20160
FJUMT-01-20	20	.0300 - .0910	4493	31490
FJUMT-01-25	25	.0300 - .0910	7251	50750
FJUMT-01-30	30	.0400 - .1100	10200	71390
FJUMT-01-40	40	.0400 - .1150	16000	112000
FJUMT-01-50	50	.0500 - .1300	25000	175000

For a Low Clearance version use part number FJUMT-31-XX

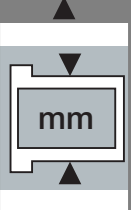
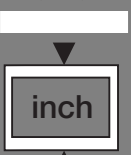
## Comparison of Flange Length and Bearing Surface of FJUM and FJUMT

Part No.	Nominal Diameter (mm)	Flange Length (mm)			Effective Surface Area (mm <sup>2</sup> )		
		FJUM-01-..	FJUMT-01-..	Difference (%)	FJUM-01-..	FJUMT-01-..	Difference (%)
FJZMT-01-08	08*	25	45	+80	192	256	+33
FJUMT-01-10	10	29	52	+80	145	250	+72
FJUMT-01-12	12	32	57	+78	186	324	+74
FJUMT-01-16	16	36	70	+94	280	464	+66
FJUMT-01-20	20	45	80	+78	440	580	+32
FJUMT-01-25	25	58	112	+93	712	975	+37
FJUMT-01-30	30	68	123	+81	1005	1470	+46
FJUMT-01-40	40	80	151	+89	1580	2360	+49
FJUMT-01-50	50	100	192	+92	2475	3450	+39

\* FJZMT-01-08 are equipped with 2 pieces JSM-0810-16

\* Nominal widths under 10mm are delivered with pressfit sleeve bearings

PDF: [www.igus.com/iglide-pdfs](http://www.igus.com/iglide-pdfs)  
CAD: [www.igus.com/iglide-CAD](http://www.igus.com/iglide-CAD)  
RoHS info: [www.igus.com/RoHS](http://www.igus.com/RoHS)





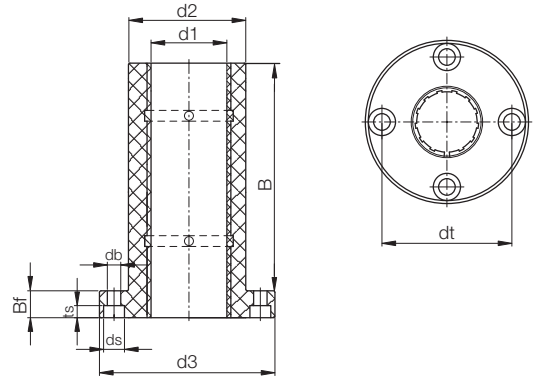
# DryLin® R Twin Flange Pillow Block Square Design FJUMT-02, mm

DryLin® R  
Linear Guide Systems



### Special Properties

- Flange housing made of anodized aluminum, square flange
- Contains 2 of the JUM-02-XX liners



### Dimensions (mm)

Part No.	d1	d2 h7	d3	dt	k	B	Bf	ts	db	ds
FJUMT-02-08*	8	16	32	24	25	45	8	3.1	3.5	6.0
FJUMT-02-10	10	19	39	29	30	52	9	4.1	4.5	7.5
FJUMT-02-12	12	22	42	32	32	57	9	4.1	4.5	7.5
FJUMT-02-16	16	26	46	36	35	70	9	4.1	4.5	7.5
FJUMT-02-20	20	32	54	43	42	80	11	5.1	5.5	9.0
FJUMT-02-25	25	40	62	51	50	112	11	5.1	5.5	9.0
FJUMT-02-30	30	47	76	62	60	123	14	6.1	6.6	11.0
FJUMT-02-40	40	62	98	80	75	151	18	8.1	9.0	14.0
FJUMT-02-50	50	75	112	94	88	192	18	8.1	9.0	14.0

### Load Data

Part No.	Nominal Size	Tolerance** Bearing Inner Diameter	pmax. Dynamic Load	pmax. Static Load
			P = 5 MPa (N)	P = 35 MPa (N)
FJZMT-02-08*	8	.0320 - .0700	1913	13430
FJUMT-02-10	10	.0300 - .0880	1450	10150
FJUMT-02-12	12	.0300 - .0880	1913	13430
FJUMT-02-16	16	.0300 - .0880	2874	20160
FJUMT-02-20	20	.0300 - .0910	4493	31490
FJUMT-02-25	25	.0300 - .0910	7251	50750
FJUMT-02-30	30	.0400 - .1100	10200	71390
FJUMT-02-40	40	.0400 - .1150	16000	112000
FJUMT-02-50	50	.0500 - .1300	25000	175000

For a Low Clearance version use part number FJUMT-32-XX

### Comparison of Flange Length and Bearing Surface of FJUM and FJUMT

Part No.	Nominal Diameter (mm)	Flange Length (mm)			Effective Surface Area (mm <sup>2</sup> )		
		FJUM-02-...	FJUMT-02-...	Difference (%)	FJUM-02-...	FJUMT-02-...	Difference (%)
FJZMT-02-08	08*	25	45	+80	192	256	+33
FJUMT-02-10	10	29	52	+80	145	250	+72
FJUMT-02-12	12	32	57	+78	186	324	+74
FJUMT-02-16	16	36	70	+94	280	464	+66
FJUMT-02-20	20	45	80	+78	440	580	+32
FJUMT-02-25	25	58	112	+93	712	975	+37
FJUMT-02-30	30	68	123	+81	1005	1470	+46
FJUMT-02-40	40	80	151	+89	1580	2360	+49
FJUMT-02-50	50	100	192	+92	2475	3450	+39

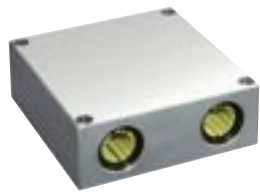
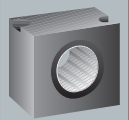
\* FJZMT-02-08 are equipped with 2 pieces JSM-0810-12

\* Nominal widths under 10mm are delivered with pressfit sleeve bearings

Telephone 1-800-521-2747  
Fax 1-401-438-7270

Internet: <http://www.igus.com>  
email: [sales@igus.com](mailto:sales@igus.com)  
QuickSpec: <http://www.igus.com/iglide-quickspec>

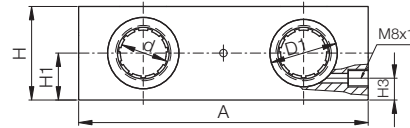
# RQA - Quad block, Closed, mm



Quad block, with DryLin® R linear bearings

## Special Properties

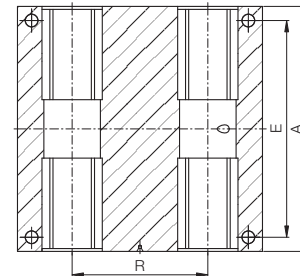
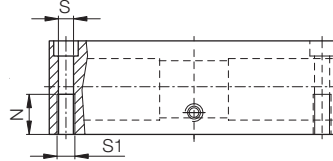
- Housing: aluminum
- Equipped with DryLin® R linear plain bearings, part no. RJUM-01-ø, RJUM-03-ø, or RJM-01
- Bearings are secured with retaining rings according to DIN 472
- Mounting bolts DIN 912-8.8, lock washer DIN 7980



## Also available as driven systems



HTS  
Page  
30.17



For a Low Clearance version use part number RQA-31-XX for standard RQA-33-XX for self-aligning

## Dimensions (mm)

Standard with RJUM-01	Self-Aligning with RJUM-03	All Plastic with RJM-01	d	D1	A	H	H1	H3	R	N	E	S	S1
RQA-01-08	RQA-03-08	RQA-04-08	8	16	65	23	11.5	8	32	11	55	4.3	M5
RQA-01-12	RQA-03-12	RQA-04-12	12	22	85	32	16	13	42	13	73	5.3	M6
RQA-01-16	RQA-03-16	RQA-04-16	16	26	100	36	18	15	54	13	88	5.3	M6
RQA-01-20	RQA-03-20	RQA-04-20	20	32	130	46	23	19	72	18	115	6.6	M8
RQA-01-25	RQA-03-25	RQA-04-25	25	40	160	56	28	24	88	22	140	8.4	M10
RQA-01-30	RQA-03-30	RQA-04-30	30	47	180	64	32	27	96	26	158	10.5	M12
RQA-01-40	RQA-03-40	RQA-04-40	40	62	230	80	40	35	122	34	202	13.5	M16

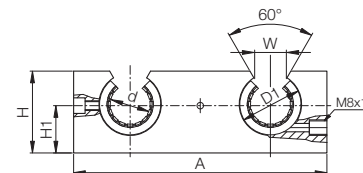
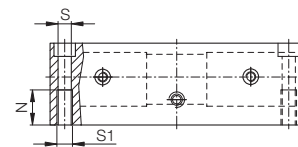
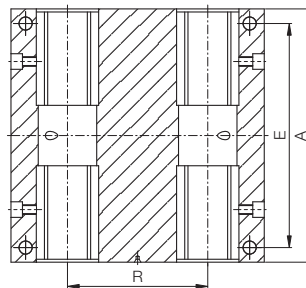
# OQA - Quad Block, Open, mm



Quad block open with DryLin® R linear bearings

## Special Properties

- Housing: aluminum
- Equipped with DryLin® R linear plain bearings, Part no. OJUM-01-ø or OJUM-03-ø
- Maintenance-free
- Mounting bolts DIN 912-8.8, lock washer DIN 7980
- Securing of the bearing in the housing is done using set screws



For a Low Clearance version use part number OQA-31-XX for standard OQA-33-XX for self-aligning

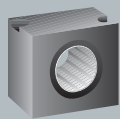
## Dimensions (mm)

Standard with OJUM-01	Self-Aligning with OJUM-03	d	D1	A	H	H1	W	R	N	E	S	S1
OQA-01-12	OQA-03-12	12	22	85	30	18	14	42	13	73	5.3	M6
OQA-01-16	OQA-03-16	16	26	100	35	22	17	54	13	88	5.3	M6
OQA-01-20	OQA-03-20	20	32	130	42	25	17	72	18	115	6.8	M8
OQA-01-25	OQA-03-25	25	40	160	51	30	21	88	22	140	9.0	M10
OQA-01-30	OQA-03-30	30	47	180	60	35	21	96	26	158	10.5	M12
OQA-01-40	OQA-03-40	40	62	230	77	45	27	122	34	202	13.5	M16



inch

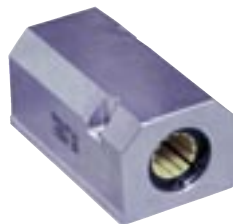
mm



## RTA - Pillow Block, Closed, Twin Design, mm

### Special Properties

- Housing: aluminum
- Equipped with DryLin® R linear plain bearings, part no. RJUM-01-ø, RJUM-03-ø or RJM-01
- Can be combined with DryLin® R housing bearing, Part No. RJUM-06-ø
- Bearings are secured with retaining rings according to DIN 472
- Mounting bolts DIN 912-8.8, lock washer DIN 7980

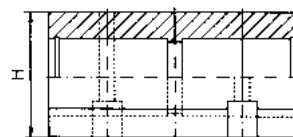
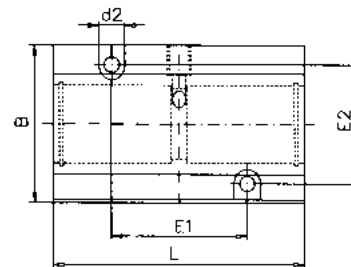
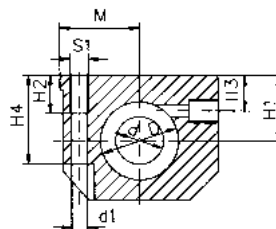


Pillow block, twin design with DryLin® R linear plain bearings

For a Low Clearance version use part number  
RTA-31-XX for standard  
RTA-33-XX for self-aligning

### Dimensions (mm)

Part No. Standard with RJUM-01	Self-Aligning with RJUM-03	All Plastic with RJM-0	d	D H6	H	H1 +0.01 -0.02	H2	H3	H4	S1	B	L +0.3	M ±0.02	E1 ±0.15	E2 ±0.15	d1	d2
RTA-01-08	-	RTA-04-08	8	16	28	13	13	8	14	M 5	35	62	17.5	35	25	4.20	8
RTA-01-12	RTA-03-12	RTA-04-12	12	22	35	18	13	10	25	M 6	43	76	21.5	40	30	5.20	10
RTA-01-16	RTA-03-16	RTA-04-16	16	26	42	22	13	12	30	M 6	53	84	26.5	45	36	5.20	10
RTA-01-20	RTA-03-20	RTA-04-20	20	32	50	25	18	13	24	M 8	60	104	30.0	55	45	6.80	11
RTA-01-25	RTA-03-25	RTA-04-25	25	40	60	30	22	15	40	M10	78	130	39.0	70	54	8.60	15
RTA-01-30	RTA-03-30	RTA-04-30	30	47	70	35	26	16	48	M12	87	152	43.5	85	62	10.30	18
RTA-01-40	RTA-03-40	RTA-04-40	40	62	90	45	34	20	60	M16	108	176	54.0	100	80	14.25	20



## OTA - Pillow Block, Open, Twin Design, mm

### Special Properties

- Housing: aluminum
- Equipped with DryLin® R linear plain bearings, Part No. OJUM-01-ø or OJUM-03-ø
- Can be combined with DryLin® R housing bearing, Part No. OJUM-06-ø
- Securing of the bearing in the housing is done using set screws
- Mounting bolts DIN 912-8.8, washer DIN 7980

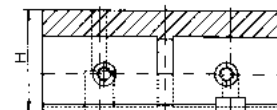
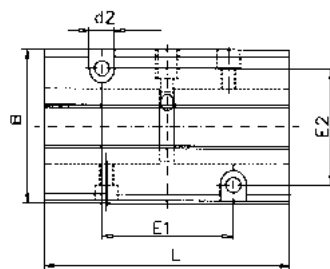
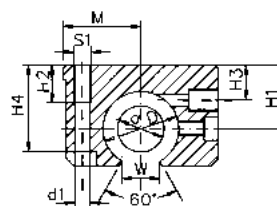


Pillow block, twin design, open with DryLin® R linear plain bearings

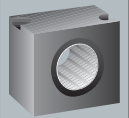
For a Low Clearance version use part number  
OTA-31-XX for standard  
OTA-33-XX for self-aligning

### Dimensions (mm)

Part No. Standard with OJUM-01	Self-Aligning with OJUM-03	d	D H6	H	H1 +0.01 -0.02	H2	H3	H4	S1	B	L +0.3	M ±0.02	E1 ±0.15	E2 ±0.15	d1	d2	W
OTA-01-12	OTA-03-12	12	22	30	18	13	10	25	M 6	43	76	21.5	40	30	5.20	10	14
OTA-01-16	OTA-03-16	16	26	35	22	13	12	30	M 6	53	84	26.5	45	36	5.20	10	17
OTA-01-20	OTA-03-20	20	32	42	25	18	13	24	M 8	60	104	30.0	55	45	6.80	11	17
OTA-01-25	OTA-03-25	25	40	51	30	22	15	40	M10	78	130	29.0	70	54	8.60	15	21
OTA-01-30	OTA-03-30	30	47	60	35	26	16	48	M12	87	152	43.5	85	62	10.30	18	21
OTA-01-40	OTA-03-40	40	62	77	45	34	20	60	M16	108	176	54.0	100	80	14.25	20	27



# RGA Pillow Block, Closed, Long Design, mm



DryLin® R  
Linear Guide Systems

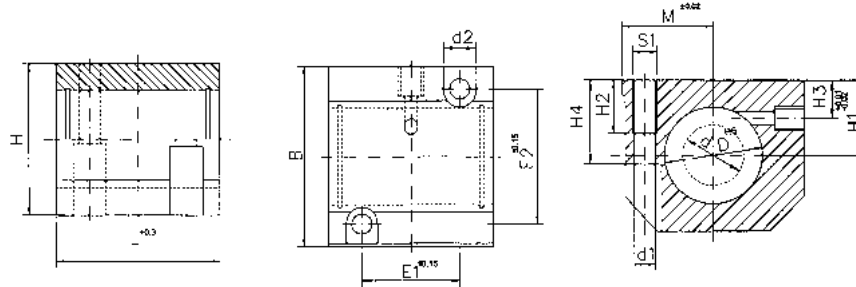
PDF: [www.igus.com/iglide-pdfs](http://www.igus.com/iglide-pdfs)  
CAD: [www.igus.com/iglide-CAD](http://www.igus.com/iglide-CAD)  
RoHS info: [www.igus.com/RoHS](http://www.igus.com/RoHS)



## Special Properties

- Housing: aluminum
- Equipped with DryLin® R linear plain bearings, Part No. RJUM-01-ø, RJUM-03-ø or RJM-01
- Can be combined with DryLin® R housing bearing, Part No. RJUM-06-ø
- Bearings are secured with retaining rings according to DIN 472

For a Low Clearance version  
use part number  
RGA-31-XX for standard  
RGA-33-XX for self-aligning



## Dimensions (mm)

Part No. Standard with RJUM-01	Self-Aligning with RJUM-03	All Plastic with RJM-01	d	D H6	H	H1 +0.01 -0.02	H2	H3	H4	S1	B	L ±0.03	M ±0.15	E1 ±0.15	E2	d1	d2
RGA-01-08	-	RGA-04-08	8	16	28	13	10	8	14	M 4	35	32	17.5	20	25	3.2	6
RGA-01-12	RGA-03-12	RGA-04-12	12	22	35	18	11	10	25	M 5	43	39	21.5	23	32	4.2	6
RGA-01-16	RGA-03-16	RGA-04-16	16	26	42	22	13	12	30	M 6	53	43	26.5	26	40	5.2	10
RGA-01-20	RGA-03-20	RGA-04-20	20	32	50	25	18	13	24	M 8	60	54	30.0	32	45	6.8	11
RGA-01-25	RGA-03-25	RGA-04-25	25	40	60	30	22	15	40	M10	78	67	39.0	40	60	8.6	15
RGA-01-30	RGA-03-30	RGA-04-30	30	47	70	35	22	16	48	M10	87	79	43.5	45	68	8.6	15
RGA-01-40	RGA-03-40	RGA-04-40	40	62	90	45	26	20	60	M12	108	91	54.0	58	86	10.3	18

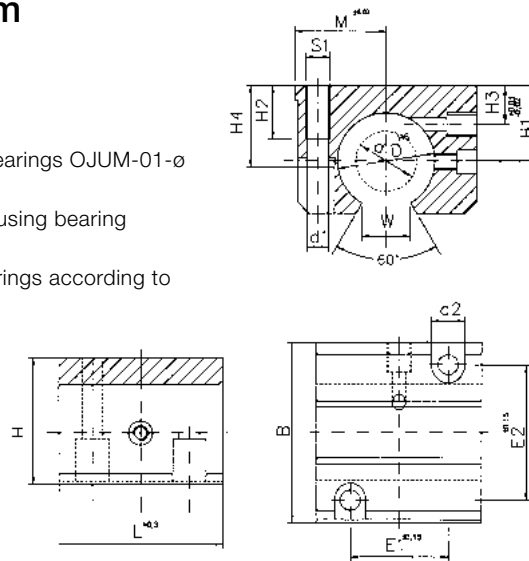
# OGA Pillow Block, Open, Long Design, mm



## Special Properties

- Housing: aluminum
- Equipped with DryLin® linear plain bearings OJUM-01-ø or OJUM-03-ø
- Can be combined with DryLin® R housing bearing OJUM-06-ø
- Bearings are secured with retaining rings according to DIN 472

For a Low Clearance version  
use part number  
OGA-31-XX for standard  
OGA-33-XX for self-aligning

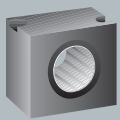


## Dimensions (mm)

Part No.. Standard with OJUM-01	Self- Self-Aligning with OJUM-03	d	D H6	H	H1 +0.01 -0.02	H2	H3	H4	S1	B +0.3	L ±0.03	M ±0.15	E1 ±0.15	E2	d1	d2	W +0.6
OGA-01-12	OGA-03-12	12	22	28	18	11	8	25	M 5	43	39	21.5	23	32	4.2	8	14
OGA-01-16	OGA-03-16	16	26	35	22	13	12	30	M 6	53	43	26.5	26	40	5.2	10	17
OGA-01-20	OGA-03-20	20	32	42	25	18	13	24	M 8	60	54	30.0	32	45	6.8	11	17
OGA-01-25	OGA-03-25	25	40	51	30	22	15	40	M10	78	67	39.0	40	60	8.6	15	21
OGA-01-30	OGA-03-30	30	47	60	35	22	16	48	M10	87	79	43.5	45	68	8.6	15	21
OGA-01-40	OGA-03-40	40	62	77	45	26	20	60	M12	108	91	54.0	58	86	10.3	18	27







## RGAS Pillow Block, Closed, Short Design, mm

DryLin® R  
Linear Guide Systems

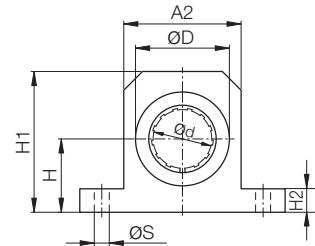
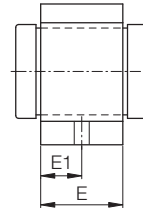
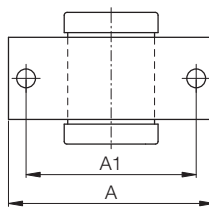
Telephone 1-800-521-2747  
Fax 1-401-438-7270



### Special Properties

- Housing: aluminum
- Equipped with DryLin® R linear plain bearings, Part No. RJUM-01-ø, RJUM-03-ø or RJM-01
- Can be combined with DryLin® R housing bearing RJUM-06-ø
- Bearings are secured with retaining rings according to DIN 472

For a Low Clearance version  
use part number  
RGAS-31-XX for standard  
RGAS-33-XX for self-aligning



### Dimensions (mm)

Part No. Standard with RJUM-01	Self-Aligning with RJUM-03	All Plastic with RJM-01	d	D	H	H1	A	A1	A2	E	E1	S
RGAS-01-12	RGAS-03-12	RGAS-04-12	12	22	18	35	52	42	30	20	10	5.3
RGAS-01-16	RGAS-03-16	RGAS-04-16	16	26	22	40.5	56	46	34	22	11	5.3
RGAS-01-20	RGAS-03-20	RGAS-04-20	20	32	25	48.0	70	58	40	28	14	6.4
RGAS-01-25	RGAS-03-25	RGAS-04-25	25	40	30	58.0	80	68	50	40	20	6.4
RGAS-01-30	RGAS-03-30	RGAS-04-30	30	47	35	67.0	88	76	58	48	24	6.4
RGAS-01-40	RGAS-03-40	RGAS-04-40	40	62	45	85.0	108	94	74	56	28	8.4

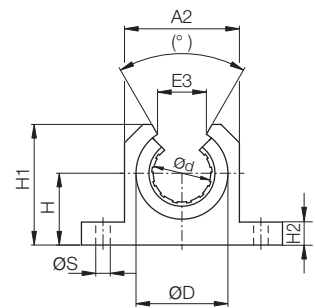
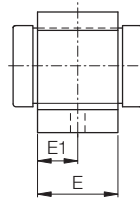
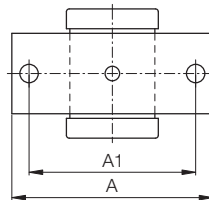
## OGAS Pillow Block, Open, Short Design, mm



### Special Properties

- Housing: aluminum
- Equipped with DryLin® R linear plain bearings, Part No. OJUM-01-ø or OJUM-03-ø
- Can be combined with DryLin® R housing bearing, Part No. OJUM-06-ø
- Securing of the bearing in the housing is done using set screws

For a Low Clearance version  
use part number  
OGAS-31-XX for standard  
OGAS-33-XX for self-aligning



### Dimensions (mm)

Part No. Standard with OJUM-01	Self-Aligning with OJUM-03	d	D	H	H1	A	A1	A2	E	E1	E3	(°)	S
OGAS-01-12	OGAS-03-12	12	22	18	28	52	42	30	20	10	14	78	5.3
OGAS-01-16	OGAS-03-16	16	26	22	33.5	56	46	34	22	11	17	78	5.3
OGAS-01-20	OGAS-03-20	20	32	25	42	70	58	40	28	14	17	60	6.4
OGAS-01-25	OGAS-03-25	25	40	30	51	80	68	50	40	20	21	60	6.4
OGAS-01-30	OGAS-03-30	30	47	35	60	88	76	58	48	24	21	54	6.4
OGAS-01-40	OGAS-03-40	40	62	45	77	108	94	74	56	28	27	54	8.4

Internet: <http://www.igus.com>  
email: [sales@igus.com](mailto:sales@igus.com)  
QuickSpec: <http://www.igus.com/iglide-quickspec>