

DryLin® W - Hybrid bearings - Product range

Hybrid bearings with a bearing-supported plastic roller



Order key

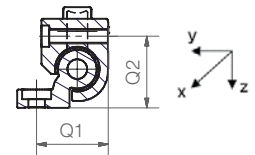
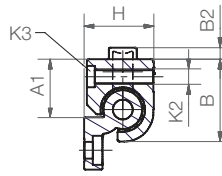
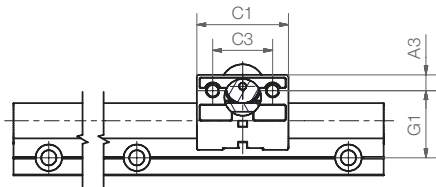
Type

WJRM-01-10

Hybrid bearing

With one roller

Size 10



Installation position 01

Installation position 02

Installation position 02 in installation size $\varnothing 10$ when using a WJRM-02-10 hybrid bearing

Technical data and dimensions [mm]

Part No.	Static load capacity C_0	Dynamic load capacity C_{z+} at total running distance (km)			$F \cdot v$ max. [N · m/s]
		10	100	200	
	[N]	[N]	[N]	[N]	
WJRM-01-10 ⁷¹⁾	250	250	90	50	50
WJRM-02-10*	250	250	90	50	50
WJRM-01-16	400	400	140	70	80
WJRM-01-20	550	550	200	100	80

* Installation position 02 requires WJRM-02-10, this cannot be performed with WJRM-01-10

Part No.	Coefficient of friction in z-direction [μ]	Weight [g]	A1	A3	B	B2	C1	C3	G1	H	K2 for thread	K3 for screw	Q1	Q2
WJRM-01-10	< 0.1	46	16.5	6.5	26	2.5	35	22	27	18	M6	M5	-	-
WJRM-02-10	< 0.1	46	16.5	6.5	26	2.5	35	22	27	18	M6	M5	-	-
WJRM-01-16	< 0.1	131	25	9	34.5	5	48	30	33	27	M8	M6	32	28
WJRM-01-20	< 0.1	232	30	9	42.5	6	52	34	38	36	M8	M6	37	37

Can be combined with:



WS-...



WS-...-ES-FG-...



WS-...



WS-...-ES-FG



WSX-...