

DryLin® R - Liner, inch

JUI-01, Standard

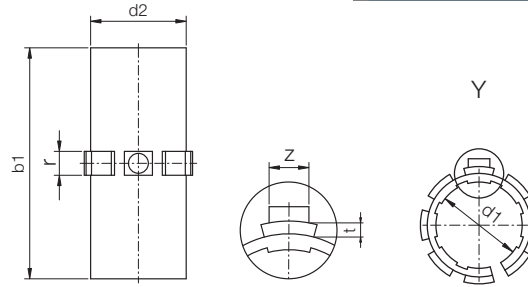
JUI-20, Low Clearance

TUI-01, High Temp



Special Properties

- Very low coefficient of friction while running dry
- Very high wear resistance
- Maintenance-free
- Vibration dampening
- Very low moisture absorption
- High chemical resistance
- Suitable for rotating, oscillating and linear movements



Part No.	Nominal Size	Tolerance*	d2	b1	r -0.004 -0.008	t -0.004	z -0.020
----------	--------------	------------	----	----	-----------------------	-------------	-------------

Standard Clearance

JUI-01-06	3/8	.0016-.0024	0.4684	0.846	.1250	.0311	.0866
JUI-01-08	1/2	.0016-.0024	0.5934	1.220	.1250	.0391	.1024
JUI-01-10	5/8	.0016-.0024	0.7184	1.460	.1406	.0391	.1181
JUI-01-12	3/4	.0016-.0024	0.8747	1.575	.1875	.0391	.1339
JUI-01-16	1	.0016-.0024	1.1247	2.205	.1875	.0391	.1496
JUI-01-20	1 1/4	.0020-.0032	1.4058	2.573	.1875	.0391	.1496
JUI-01-24	1 1/2	.0020-.0032	1.6558	2.953	.2500	.0625	.1811
JUI-01-32	2	.0024-.0040	2.1871	3.937	.2813	.0625	.2280



JUI-01-XX

Material: iglide® J
Temp. range: -40°F to +194°F
Best Shaft Material: DryLin® AWI hard anodized aluminum, case hardened steel, 300 series stainless

Low Clearance

JUI-20-06	3/8	.0008-.0012	0.4684	0.846	.1250	.0311	.0866
JUI-20-08	1/2	.0008-.0012	0.5934	1.220	.1250	.0391	.1024
JUI-20-10	5/8	.0008-.0012	0.7184	1.460	.1406	.0391	.1181
JUI-20-12	3/4	.0008-.0012	0.8747	1.575	.1875	.0391	.1339
JUI-20-16	1	.0008-.0012	1.1247	2.205	.1875	.0391	.1496
JUI-20-20	1 1/4	.0010-.0016	1.4058	2.573	.1875	.0391	.1496
JUI-20-24	1 1/2	.0010-.0016	1.6558	2.953	.2500	.0625	.1811
JUI-20-32	2	.0012-.0020	2.1871	3.937	.2813	.0625	.2280



JUI-20-XX

Material: iglide® J
Temp. range: -40°F to +194°F
Best Shaft Material: DryLin® AWI hard anodized aluminum, case hardened steel, 300 series stainless

High Temperature

TUI-01-08	1/2	.0016-.0024	0.5934	1.220	.1250	.0391	.1024
TUI-01-12	3/4	.0016-.0024	0.8747	1.545	.1875	.0391	.1339
TUI-01-16	1	.0016-.0024	1.1247	2.205	.1875	.0391	.1496
TUI-01-20	1 1/4	.0020-.0032	1.4058	2.573	.1875	.0391	.1496
TUI-01-24	1 1/2	.0020-.0032	1.6558	2.953	.2500	.0625	.1811



TUI-01-XX
*2-piece design

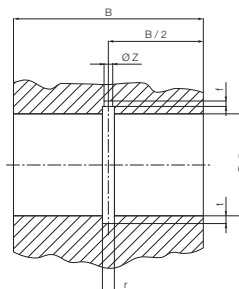
Material: iglide® T500
Temp. range: -148°F to +482°F
Best Shaft Material: Hardened stainless and hard chrome plated steel

* according to igus® testing method ▶ Page 29.57

Housing Bore for Liner JUI-01/JUI-20/TUI-01

Dimensions (inch)

Part No.	Nominal Size	di		B *h10	r +0.002	t +0.004	f +0.02	z +0.008
		Max.	Min.					
JUI-01-06	3/8	.4680	.4684	.875	.1250	.031	.039	.102
JUI-01-08	1/2	.5940	.5934	1.250	.1250	.0391	.059	.122
JUI-01-10	5/8	.7190	.7184	1.500	.1406	.0391	.067	.142
JUI-01-12	3/4	.8755	.8747	1.625	.1875	.0391	.079	.142
JUI-01-16	1	1.1255	1.1247	2.250	.1875	.0391	.079	.161
JUI-01-20	1 1/4	1.4068	1.4058	2.625	.1875	.0391	.079	.161
JUI-01-24	1 1/2	1.6568	1.6558	3.000	.2500	.051	.098	.200
JUI-01-32	2	2.1881	2.1871	4.000	.2813	.051	.098	.240



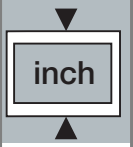
JUI-01/JUI-20/TUI-01 Liners are used in:

- ▶ RJUI-01 Page 29.12
- ▶ RJUI-03 Page 29.13
- ▶ TJUI-01 Page 29.14
- ▶ TJUI-03 Page 29.15



Online Lifetime Calculation
www.igus.com

PDF: www.igus.com/iglide-pdfs
 CAD: www.igus.com/iglide-CAD
 RoHS info: www.igus.com/RoHS





DryLin® R - Open Liner, inch JU10-0, Standard JU10-20, Low Clearance

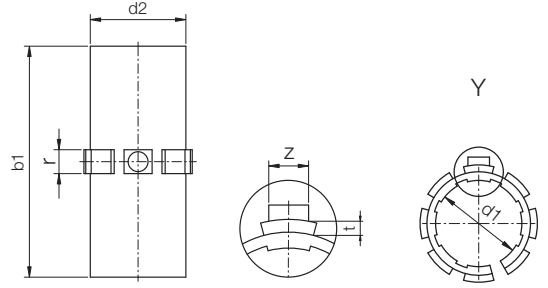
DryLin® R
Linear Guide Systems

Telephone 1-800-521-2747
1-401-438-7270
Fax

Internet: <http://www.igus.com>
email: sales@igus.com
QuickSpec: <http://www.igus.com/iglide-quickspec>

Special Properties

- Open design for supported shafts
- Very low coefficient of friction while running dry
- Very high wear resistance
- Maintenance-free
- Vibration dampening
- Very low moisture absorption
- High chemical resistance
- Suitable for rotating, oscillating and linear movements
- High temperature T500 liners available for up to 482°F



Part No.	Nominal Size	Tolerance	d2	b1	W	r	t	z
						-0.004	-0.004	-0.020
						-0.008		

Standard Clearance

JU10-01-06	3/8	.0016-.0024	0.4684	0.846	0.250	.1250	.0311	.0866
JU10-01-08	1/2	.0016-.0024	0.5934	1.220	0.394	.1250	.0391	.1024
JU10-01-10	5/8	.0016-.0024	0.7184	1.460	0.433	.1406	.0391	.1181
JU10-01-12	3/4	.0016-.0024	0.8747	1.575	0.492	.1875	.0391	.1339
JU10-01-16	1	.0016-.0024	1.1247	2.205	0.630	.1875	.0391	.1496
JU10-01-20	1 1/4	.0020-.0032	1.4058	2.573	0.709	.1875	.0391	.1496
JU10-01-24	1 1/2	.0020-.0032	1.6558	2.953	0.866	.2500	.0625	.1811
JU10-01-32	2	.0024-.0040	2.1871	4.937	1.181	.2813	.0625	.2280



Material: iglide® J
Temp. range: -40°F to +194°F
Best Shaft Material: DryLin® AWI hard anodized aluminum, case hardened steel, 300 series stainless

Low Clearance

JU10-20-06	3/8	.0008-.0012	0.4684	0.846	0.250	.1250	.0311	.0866
JU10-20-08	1/2	.0008-.0012	0.5934	1.220	0.394	.1250	.0391	.1024
JU10-20-10	5/8	.0008-.0012	0.7184	1.460	0.433	.1406	.0391	.1181
JU10-20-12	3/4	.0008-.0012	0.8747	1.575	0.492	.1875	.0391	.1339
JU10-20-16	1	.0008-.0012	1.1247	2.205	0.630	.1875	.0391	.1496
JU10-20-20	1 1/4	.0010-.0016	1.4058	2.573	0.709	.1875	.0391	.1496
JU10-20-24	1 1/2	.0010-.0016	1.6558	2.953	0.866	.2500	.0625	.1811
JU10-20-32	2	.0012-.0020	2.1871	4.937	1.181	.2813	.0625	.2280



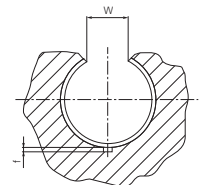
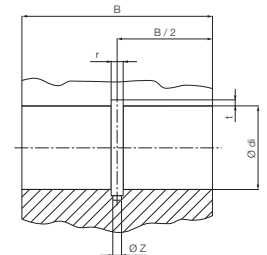
Material: iglide® J
Temp. range: -40°F to +194°F
Best Shaft Material: DryLin® AWI hard anodized aluminum, case hardened steel, 300 series stainless

* according to igus® testing method ► Page 29.57

Installation Drawings

Housing Bore, Dimensions [Inch]

Part No.	Shaft Size Ø	di [inch]		B [inch] *h10	r [inch] +0.002	t [inch] +0.004	f [inch] +0.02	z [inch] +0.008	W [inch] +0.008
		Min.	Max.						
JU10-01/20-06	3/8	.4680	.4684	.875	.1250	.031	.039	.102	0.250
JU10-01/20-08	1/2	.5940	.5934	1.250	.1250	.031	.059	.122	0.394
JU10-01/20-10	5/8	.7190	.7184	1.500	.1406	.039	.067	.142	0.433
JU10-01/20-12	3/4	.8755	.8747	1.625	.1875	.039	.079	.142	0.492
JU10-01/20-16	1	1.1255	1.1247	2.250	.1875	.039	.079	.161	0.630
JU10-01/20-20	1 1/4	1.4068	1.4058	2.625	.1875	.039	.079	.161	0.709
JU10-01/20-24	1 1/2	1.6568	1.6558	3.000	.2500	.062	.089	.200	0.866
JU10-01/20-32	2	2.1881	2.1871	4.000	.2813	.062	.098	.240	1.181



*See ISO tolerance information on Page 29.57

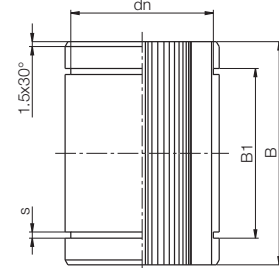
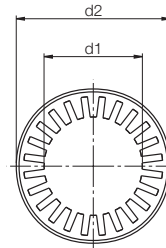
JU10-01 Liners are used in:
► OJUI-01, Page 29.16
► OJUI-03, Page 29.17

DryLin® R - Liner RJI-01, inch



Special Properties

- Plain bearing made from iglide® J
- Dimensionally interchangeable with linear ball bearings
- Secured by retaining clips (not included in delivery)
- Designed as a press-fit part
- Temperature range: -40°F to +194°F
- Best with DryLin® AWI shafting, case-hardened steel, 300 series stainless and others (call for assistance)



Dimensions (inch)

Part No.	d1	d2	B	B1	S	dn
RJI-01-06	3/8	.6250	.8750	.6890	.0410	.5870
RJI-01-08	1/2	.8750	1.2500	1.0120	.0520	.8200
RJI-01-10	5/8	1.1250	1.5000	1.0950	.0620	1.0600
RJI-01-12	3/4	1.2500	1.6200	1.2500	.0620	1.1770
RJI-01-16	1	1.5625	2.2500	1.8640	.0740	1.4710
RJI-01-20	1-1/4	2.0000	2.6250	1.9840	.0740	1.8890
RJI-01-24	1-1/2	2.3750	3.0000	2.3900	.0950	2.2410
RJI-01-32	2	3.0000	4.0000	3.1630	.1110	2.8390

Load Data

Part No.	Nominal Size	Tolerance for d1	pmax	pmax	Weight
			Dynamic Load (lbs)	Static Load (lbs)	
RJI-01-06	3/8	.0010 - .0024	67 p = 363 psi	417 p = 2538 psi	.10 (oz.)
RJI-01-08	1/2	.0013 - .0030	80	555	.31
RJI-01-10	5/8	.0013 - .0030	141	992	.61
RJI-01-12	3/4	.0016 - .0036	204	1428	.78
RJI-01-16	1	.0016 - .0036	294	2062	1.5
RJI-01-20	1-1/4	.0020 - .0044	595	4163	2.86
RJI-01-24	1-1/2	.0020 - .0044	816	5710	4.48
RJI-01-32	2	.0024 - .0053	1452	10152	8.78

* according to igus® testing method ► Page 29.57

Housing Bore Recommendations

Nominal ID Size	Min.	Max.
3/8	0.6250	0.6257
1/2	0.8750	0.8758
5/8	1.1250	1.1258
3/4	1.2500	1.2510
1	1.5620	1.5630
1-1/4	2.0000	2.0010
1-1/2	2.3750	2.3760
2	3.0000	3.0010

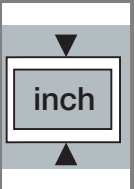
RJI is a press-fit part. It will be oversized prior to installation



online lifetime calculation
www.igus.com

DryLin® R
Linear Guide Systems

PDF: www.igus.com/iglide-pdfs
CAD: www.igus.com/iglide-CAD
RoHS info: www.igus.com/RoHS





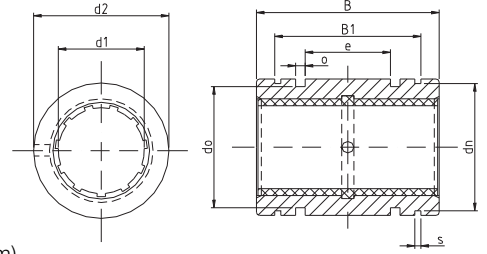
DryLin® R Straight Linear Plain Bearing - Inch

DryLin® R
Linear Guide Systems



Special Properties

- Anodized aluminum adapter (Stainless available upon request)
- Dimensionally interchangeable with linear ball bearings
- Equipped with liner made of iglide® J
Temperature range -40°F to +194°F
JUI-01 (standard), JUI-20 (low clearance)
- T500 liner optional for chemicals/high temps (up to 482°F for steel housing, 356°F for aluminum)
- Suitable shafting for iglide® J: DryLin® AWI aluminum, case-hardened, 300 series stainless
Best shafting for T500: hard-chrome and hard-stainless steel



RJUI-01, Standard Clearance

Dimensions (inch)

Part No.	Nominal Size	Tolerance**	d2	B	B1	s	dn	e	o	do
			ISO h7	ISO h10	ISO H10					
RJZI-01-04*	1/4	.0016 - .0032	.5000	.7500	.518	.0410	.4670	.125	.0800	.3990
RJUI-01-06	3/8	.0016 - .0032	.6250	.8700	.644	.0410	.5870	.243	.0610	.5660
RJUI-01-08	1/2	.0016 - .0032	.8750	1.2500	.979	.0520	.8200	.281	.1250	.7120
RJUI-01-10	5/8	.0016 - .0032	1.1250	1.5000	1.124	.0620	1.0600	.312	.1250	.9620
RJUI-01-12	3/4	.0016 - .0032	1.2500	1.6200	1.186	.0620	1.1770	.312	.1250	1.0870
RJUI-01-16	1	.0016 - .0032	1.5625	2.2500	1.773	.0740	1.4710	.500	.1250	1.3990
RJUI-01-20	1-1/4	.0020 - .0041	2.0000	2.6200	2.023	.0740	1.8890	.625	.1250	1.8370
RJUI-01-24	1-1/2	.0020 - .0041	2.3750	3.0000	2.440	.0950	2.2410	.750	.1620	2.1520
RJUI-01-32	2	.0024 - .0051	3.0000	4.0000	3.222	.1110	2.8390	1.000	.1890	2.7750

RJUI-21, Low Clearance

Dimensions (inch)

Part No.	Nominal Size	Tolerance**	d2	B	B1	s	dn	e	o	do
			ISO h7	ISO h10	ISO H10					
RJUI-21-06	3/8	.0008 - .0016	.6250	.8700	.644	.0410	.5870	.243	.0610	.5660
RJUI-21-08	1/2	.0008 - .0016	.8750	1.2500	.979	.0520	.8200	.281	.1250	.7120
RJUI-21-10	5/8	.0008 - .0016	1.1250	1.5000	1.124	.0620	1.0600	.312	.1250	.9620
RJUI-21-12	3/4	.0008 - .0016	1.2500	1.6200	1.186	.0620	1.1770	.312	.1250	1.0870
RJUI-21-16	1	.0008 - .0016	1.5625	2.2500	1.773	.0740	1.4710	.500	.1250	1.3990
RJUI-21-20	1-1/4	.0010 - .0021	2.0000	2.6200	2.023	.0740	1.8890	.625	.1250	1.8370
RJUI-21-24	1-1/2	.0010 - .0021	2.3750	3.0000	2.440	.0950	2.2410	.750	.1620	2.1520
RJUI-21-32	2	.0012 - .0026	3.0000	4.0000	3.222	.1110	2.8390	1.000	.1890	2.7750

Housing Bore Recommendations

Nominal ID Size	Min. Max.	
	1/4	0.5000
3/8	0.6250	0.6257
1/2	0.8750	0.8758
5/8	1.1250	1.1258
3/4	1.2500	1.2510
1	1.5625	1.5635
1-1/4	2.0000	2.0010
1-1/2	2.3750	2.3760
2	3.0000	3.0010

Load Data

Part No.	pmax Dynamic Load (lbs)	pmax Static Load (lbs)
	p = 725 psi	p = 5075 psi
RJZI-01-04*	135	946
RJUI-01-06 / RJUI-21-06	118	828
RJUI-01-08 / RJUI-21-08	225	1575
RJUI-01-10 / RJUI-21-10	338	2365
RJUI-01-12 / RJUI-21-12	439	3077
RJUI-01-16 / RJUI-21-16	811	5678
RJUI-01-20 / RJUI-21-20	1184	8287
RJUI-01-24 / RJUI-21-24	1622	11358
RJUI-01-32 / RJUI-21-32	2885	20198

* Nominal widths under 3/8 inch are delivered with pressfit sleeve bearings

** according to igus® testing method ▶ Page 29.57

Telephone 1-800-521-2747
1-401-438-7270
Fax

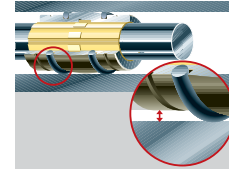
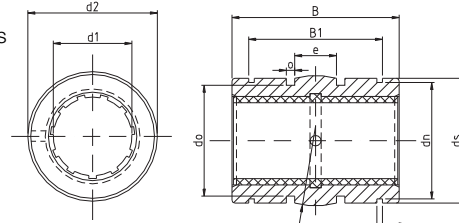
Internet: <http://www.igus.com>
email: sales@igus.com
QuickSpec: <http://www.igus.com/iglide-quickspec>

DryLin® R Self-Aligning Linear Plain Bearing, inch



Special Properties

- Hard anodized aluminum (Stainless available upon request)
- Compensates +/- 0.5° angle error
- Approximately 0.007" smaller OD for parallelism errors
- iglide® J Temperature range -40°F to +194°F
JUI-01 (standard), JUI-20 (low clearance)
- T500 liner optional for chemicals/high temps, 356°F for aluminum
- Suitable shafting for iglide® J: DryLin® AWI aluminum, case-hardened, 300 series stainless
Best shafting for T500: hard-chrome and hard-stainless steel
- Includes o-rings (o-ring grease recommended for install)
- Secure by retaining clips (not included)



DryLin® R
Linear Guide Systems

RJUI-03, Standard Clearance

Dimensions (inch)

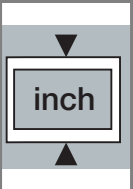
Part No.	Nominal Size	Tolerance**	d2 ISO h8	B ISO h10	B1 ISO H10	s	ds	dn ISO h10	do	o -0.004	e
RJZI-03-04*	1/4	.0016-.0032	.4921	.7460	.5270	.0410	.4803	.4660	.3990	.0800	.1250
RJUI-03-06	3/8	.0016-.0032	.6173	.8713	.6520	.0410	.6055	.5870	.5240	.0610	.2430
RJUI-03-08	1/2	.0016-.0032	.8673	1.2461	.9870	.0520	.8556	.8200	.7120	.1250	.2815
RJUI-03-10	5/8	.0016-.0032	1.1173	1.4961	1.1360	.0620	1.1055	1.0600	.9620	.1250	.3125
RJUI-03-12	3/4	.0016-.0032	1.2421	1.6173	1.1980	.0620	1.2300	1.1770	1.0870	.1250	.3125
RJUI-03-16	1	.0016-.0032	1.5547	2.2421	1.7890	.0740	1.5271	1.4710	1.3990	.1250	.5000
RJUI-03-20	1-1/4	.0020-.0041	1.9881	2.6173	2.0390	.0740	1.9606	1.8890	1.8370	.1250	.6250
RJUI-03-24	1-1/2	.0020-.0041	2.3634	2.9921	2.4630	.0950	2.3358	2.2410	2.1520	.1620	.7500
RJUI-03-32	2	.0024-.0051	2.9881	3.9921	3.2490	.1110	2.9606	2.8390	2.7750	.1890	1.0000

RJUI-23, Low Clearance

Dimensions (inch)

Part No.	Nominal Size	Tolerance**	d2 ISO h8	B ISO h10	B1 ISO H10	s	ds	dn ISO h10	do	o -0.004	e
RJUI-23-06	3/8	.0008-.0016	.6173	.8713	.6520	.0410	.6055	.5870	.5240	.0610	.2430
RJUI-23-08	1/2	.0008-.0016	.8673	1.2461	.9870	.0520	.8556	.8200	.7120	.1250	.2815
RJUI-23-10	5/8	.0008-.0016	1.1173	1.4961	1.1360	.0620	1.1055	1.0600	.9620	.1250	.3125
RJUI-23-12	3/4	.0008-.0016	1.2421	1.6173	1.1980	.0620	1.2300	1.1770	1.0870	.1250	.3125
RJUI-23-16	1	.0008-.0016	1.5547	2.2421	1.7890	.0740	1.5271	1.4710	1.3990	.1250	.5000
RJUI-23-20	1-1/4	.0010-.0021	1.9881	2.6173	2.0390	.0740	1.9606	1.8890	1.8370	.1250	.6250
RJUI-23-24	1-1/2	.0010-.0021	2.3634	2.9921	2.4630	.0950	2.3358	2.2410	2.1520	.1620	.7500
RJUI-23-32	2	.0012-.0026	2.9881	3.9921	3.2490	.1110	2.9606	2.8390	2.7750	.1890	1.0000

PDF: www.igus.com/iglide-pdfs
CAD: www.igus.com/iglide-CAD
RoHS info: www.igus.com/RoHS



Housing Bore Recommendations

Nominal ID Size	Min.	Max.
1/4	0.5000	0.5007
3/8	0.6250	0.6257
1/2	0.8750	0.8758
5/8	1.1250	1.1258
3/4	1.2500	1.2510
1	1.5625	1.5635
1-1/4	2.0000	2.0010
1-1/2	2.3750	2.3760
2	3.0000	3.0010

Load Data

Part No.	pmax Dynamic Load (lbs) p = 725 psi	pmax Static Load (lbs) p = 5075 psi
RJZI-03-04*	135	946
RJUI-03-06 / RJUI-23-06	118	828
RJUI-03-08 / RJUI-23-08	225	1575
RJUI-03-10 / RJUI-23-10	338	2365
RJUI-03-12 / RJUI-23-12	439	3077
RJUI-03-16 / RJUI-23-16	811	5678
RJUI-03-20 / RJUI-23-20	1184	8287
RJUI-03-24 / RJUI-23-24	1622	11358
RJUI-03-32 / RJUI-23-32	2885	20198

* Nominal widths under 3/8 inch are delivered with pressfit sleeve bearings

** according to igus® testing method ▶ Page 29.57



DryLin® R Straight, Split Linear Bearings, inch

DryLin® R
Linear Guide Systems

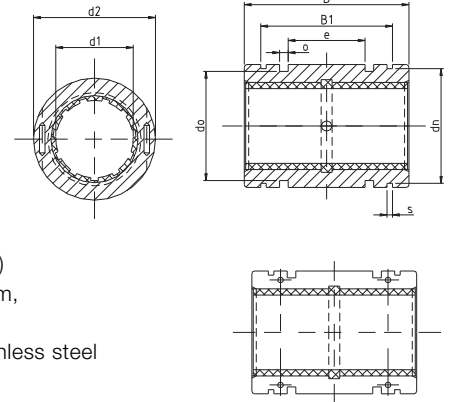
Telephone 1-800-521-2747
1-401-438-7270
Fax

Internet: <http://www.igus.com>
email: sales@igus.com
QuickSpec: <http://www.igus.com/iglide-quickspec>



Special Properties

- Anodized aluminum adapter
- Dimensionally interchangeable with linear ball bearings
- Equipped with liner made of iglide® J
Temperature range -40°F to +194°F
JUI-01 (standard), JUI-20 (low clearance)
- T500 liner optional for chemicals/high temps
(up to 482°F for steel housing, 356°F for aluminum)
- Suitable shafting for iglide® J: DryLin® AWI aluminum, case-hardened, 300 series stainless
Best shafting for T500: hard-chrome and hard-stainless steel



TJUI-01, Standard Clearance

Dimensions (inch)

Part No.	Nominal Size	Tolerance*	d2 ISO f7	B ISO h10	B1 ISO H10	s	dn	e	o +0.008	do
TJUI-01-08	1/2	.0016 - .0036	.8750	1.2500	.979	.0520	.8200	.281	.1250	.7120
TJUI-01-10	5/8	.0016 - .0036	1.1250	1.5000	1.124	.0620	1.0600	.312	.1250	.9620
TJUI-01-12	3/4	.0016 - .0036	1.2500	1.6250	1.186	.0620	1.1770	.312	.1250	1.0870
TJUI-01-16	1	.0016 - .0036	1.5625	2.2500	1.773	.0740	1.4710	.500	.1250	1.3990
TJUI-01-20	1-1/4	.0020 - .0039	2.0000	2.6250	2.023	.0740	1.8890	.625	.1250	1.8370
TJUI-01-24	1-1/2	.0020 - .0047	2.3750	3.0000	2.440	.0950	2.2410	.650	.1620	2.1520
TJUI-01-32	2	.0024 - .0057	3.0000	4.0000	3.222	.1110	2.8390	1.000	.1890	2.7750

TJUI-21, Low Clearance

Dimensions (inch)

Part No.	Nominal Size	Tolerance*	d2 ISO f7	B ISO h10	B1 ISO H10	s	dn	e	o +0.008	do
TJUI-21-08	1/2	.0008 - .0018	.8750	1.2500	.979	.0520	.8200	.281	.1250	.7120
TJUI-21-10	5/8	.0008 - .0018	1.1250	1.5000	1.124	.0620	1.0600	.312	.1250	.9620
TJUI-21-12	3/4	.0008 - .0018	1.2500	1.6250	1.186	.0620	1.1770	.312	.1250	1.0870
TJUI-21-16	1	.0008 - .0018	1.5625	2.2500	1.773	.0740	1.4710	.500	.1250	1.3990
TJUI-21-20	1-1/4	.0010 - .0020	2.0000	2.6250	2.023	.0740	1.8890	.625	.1250	1.8370
TJUI-21-24	1-1/2	.0010 - .0024	2.3750	3.0000	2.440	.0950	2.2410	.650	.1620	2.1520
TJUI-21-32	2	.0012 - .0029	3.0000	4.0000	3.222	.1110	2.8390	1.000	.1890	2.7750

Housing Bore Recommendations

Nominal ID Size	Min.	Max.
1/4	0.5000	0.5007
3/8	0.6250	0.6257
1/2	0.8750	0.8758
5/8	1.1250	1.1258
3/4	1.2500	1.2510
1	1.5625	1.5635
1-1/4	2.0000	2.0010
1-1/2	2.3750	2.3760
2	3.0000	3.0010

Load Data

Part No.	pmax Dynamic Load (lbs) p = 725 psi	pmax Static Load (lbs) p = 5075 psi
	TJUI-01-08 / TJUI-03-08	225
TJUI-01-10 / TJUI-03-10	338	2365
TJUI-01-12 / TJUI-03-12	439	3077
TJUI-01-16 / TJUI-03-16	811	5678
TJUI-01-20 / TJUI-03-20	1184	8287
TJUI-01-24 / TJUI-03-24	1622	11358
TJUI-01-32 / TJUI-03-32	2885	20198

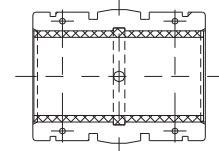
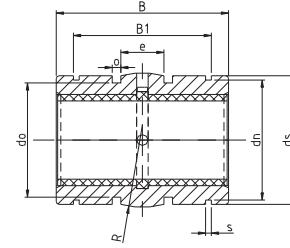
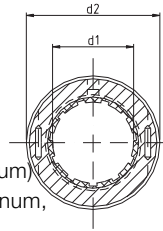
Material: iglide® J
Temp. range: -40°F to +194°F
Best Shaft Material: DryLin® AWI hard anodized aluminum, case hardened steel, 300 series stainless

DryLin® R Self-Aligning, Split Linear Plain Bearing, inch



Special Properties

- Anodized aluminum adapter
- Dimensionally interchangeable with linear ball bearings
- iglide® J Temperature range -40°F to +194°F
- T500 liner optional for chemicals/high temps (up to 482°F for steel housing, 356°F for aluminum)
- Suitable shafting for iglide® J: DryLin® AWI aluminum, case-hardened, 300 series stainless
Best shafting for T500: hard-chrome and hard-stainless steel
- Includes o-rings (o-ring grease recommended for install)



TJUI-03, Standard Clearance

Dimensions (inch)

Part No.	∅ Shaft	Tolerance*	d2 ISO f7	B ISO h10	B1 ISO H10	s	ds	do	o +0.008	e
TJUI-03-08	1/2	.0016 - .0036	.8750	1.2420	.987	.0520	.8563	.7120	.1250	.2815
TJUI-03-10	5/8	.0016 - .0036	1.1250	1.4920	1.136	.0620	1.1039	.9620	.1250	.3125
TJUI-03-12	3/4	.0016 - .0036	1.2500	1.6170	1.198	.0620	1.2276	1.0870	.1250	.3125
TJUI-03-16	1	.0016 - .0036	1.5625	2.2382	1.789	.0740	1.5350	1.3990	.1250	.5000
TJUI-03-20	1-1/4	.0020 - .0039	2.0000	2.6134	2.039	.0740	1.9654	1.8370	.1250	.6250
TJUI-03-24	1-1/2	.0020 - .0047	2.3750	2.9843	2.463	.0950	2.3370	2.1520	.1620	.7500
TJUI-03-32	2	.0024 - .0057	3.0000	3.9803	3.249	.1110	2.9531	2.7750	.1890	1.0000

TJUI-23, Low Clearance

Dimensions (inch)

Part No.	∅ Shaft	Tolerance*	d2 ISO f7	B ISO h10	B1 ISO H10	s	ds	do	o +0.008	e
TJUI-23-08	1/2	.0008 - .0018	.8750	1.2420	.987	.0520	.8563	.7120	.1250	.2815
TJUI-23-10	5/8	.0008 - .0018	1.1250	1.4920	1.136	.0620	1.1039	.9620	.1250	.3125
TJUI-23-12	3/4	.0008 - .0018	1.2500	1.6170	1.198	.0620	1.2276	1.0870	.1250	.3125
TJUI-23-16	1	.0008 - .0018	1.5625	2.2382	1.789	.0740	1.5350	1.3990	.1250	.5000
TJUI-23-20	1-1/4	.0010 - .0020	2.0000	2.6134	2.039	.0740	1.9654	1.8370	.1250	.6250
TJUI-23-24	1-1/2	.0010 - .0024	2.3750	2.9843	2.463	.0950	2.3370	2.1520	.1620	.7500
TJUI-23-32	2	.0012 - .0029	3.0000	3.9803	3.249	.1110	2.9531	2.7750	.1890	1.0000

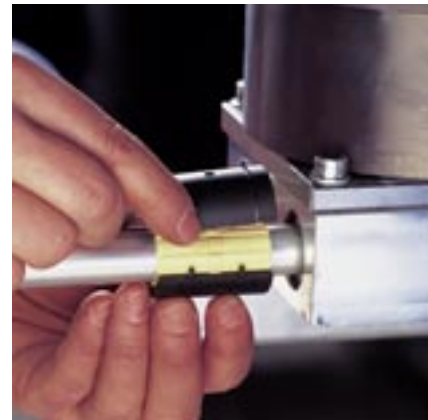
* according to iglus® testing method ▶ Page 29.57

Housing Bore Recommendations

Nominal ID Size	Min.	Max.
1/4	0.5000	0.5007
3/8	0.6250	0.6257
1/2	0.8750	0.8758
5/8	1.1250	1.1258
3/4	1.2500	1.2510
1	1.5625	1.5635
1-1/4	2.0000	2.0010
1-1/2	2.3750	2.3760
2	3.0000	3.0010

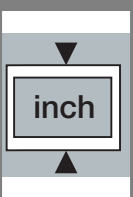
Benefits

- Drastically reduce machine downtime
- Replace bearings without removing shafts
- Unique, cost-effective solution versus ball bearings



DryLin® R
Linear Guide Systems

PDF: www.igus.com/iglide-pdfs
CAD: www.igus.com/iglide-CAD
RoHS info: www.igus.com/RoHS



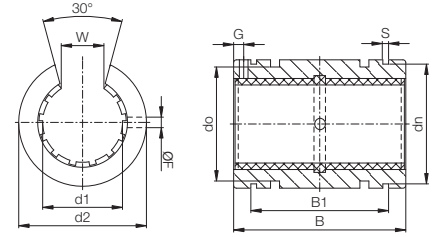


iglus®

DryLin® R Straight, Open Linear Bearing, inch

Special Properties

- Anodized aluminum adapter
- Dimensionally interchangeable with linear ball bearings
- Equipped with liner made of iglide® J
Temperature range -40°F to +194°F
JUJO-01 (standard), JUI-20 (low clearance)
- T500 liner optional for chemicals/high temps
(up to 482°F for steel housing, 356°F for aluminum)
- Suitable shafting for iglide® J: DryLin® AW1 aluminum, case-hardened, 300 series stainless
Best shafting for T500: hard-chrome and hard-stainless steel



OJUI-01, Standard Clearance

Dimensions (inch)

Part No..	Ø Shaft	Tolerance*	d2 ISO h7	B ISO h10	W ±0.012	s	dn ISO h10	B1 ISO H10	F +0.004	G +0.004	do
OJUI-01-08	1/2	.0016 - .0032	.8750	1.2500	.3940	.0520	.8200	.979	.1360	.6250	.684
OJUI-01-10	5/8	.0016 - .0032	1.1250	1.5000	.4330	.0620	1.0600	1.124	.1360	.1250	.934
OJUI-01-12	3/4	.0016 - .0032	1.2500	1.6250	.4920	.0620	1.1770	1.186	.1360	.1250	1.059
OJUI-01-16	1	.0016 - .0032	1.5625	2.2500	.6300	.0740	1.4710	1.773	.1360	.1250	1.372
OJUI-01-20	1-1/4	.0020 - .0041	2.0000	2.6250	.7090	.0740	1.8890	2.023	.2010	.1875	1.809
OJUI-01-24	1-1/2	.0020 - .0041	2.3750	3.0000	.8660	.0950	2.2410	2.440	.2010	.1875	2.113
OJUI-01-32	2	.0024 - .0051	3.0000	4.0000	1.1810	.1110	2.8390	3.222	.2650	.3125	2.738

OJUI-21, Low Clearance

Dimensions (inch)

Part No..	Ø Shaft	Tolerance*	d2 ISO h7	B ISO h10	W ±0.012	s	dn ISO h10	B1 ISO H10	F +0.004	G +0.004	do
OJUI-21-08	1/2	.0008 - .0016	.8750	1.2500	.3940	.0520	.8200	.979	.1360	.6250	.684
OJUI-21-10	5/8	.0008 - .0016	1.1250	1.5000	.4330	.0620	1.0600	1.124	.1360	.1250	.934
OJUI-21-12	3/4	.0008 - .0016	1.2500	1.6250	.4920	.0620	1.1770	1.186	.1360	.1250	1.059
OJUI-21-16	1	.0008 - .0016	1.5625	2.2500	.6300	.0740	1.4710	1.773	.1360	.1250	1.372
OJUI-21-20	1-1/4	.0010 - .0021	2.0000	2.6250	.7090	.0740	1.8890	2.023	.2010	.1875	1.809
OJUI-21-24	1-1/2	.0010 - .0021	2.3750	3.0000	.8660	.0950	2.2410	2.440	.2010	.1875	2.113
OJUI-21-32	2	.0012 - .0026	3.0000	4.0000	1.1810	.1110	2.8390	3.222	.2650	.3125	2.738

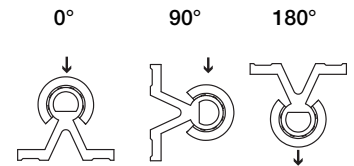
* according to igus® testing method ▶ Page 29.57

Housing Bore Recommendations

Nominal ID Size	Min.	Max.
1/4	0.5000	0.5007
3/8	0.6250	0.6257
1/2	0.8750	0.8758
5/8	1.1250	1.1258
3/4	1.2500	1.2510
1	1.5625	1.5635
1-1/4	2.0000	2.0010
1-1/2	2.3750	2.3760
2	3.0000	3.0010

Load Data

Part No.	pmax. Dynamic Load P = 725 psi			pmax. Static Load P = 5075 psi		
	0°	90°	180°	0°	90°	180°
	OJUI-01-08 / OJUI-21-08	226	154	80	1585	1078
OJUI-01-10 / OJUI-21-10	340	231	118	2378	1617	832
OJUI-01-12 / OJUI-21-12	408	277	143	2854	1942	998
OJUI-01-16 / OJUI-21-16	590	400	206	4123	2804	1443
OJUI-01-20 / OJUI-21-20	1189	809	416	8323	5659	2912
OJUI-01-24 / OJUI-21-24	1631	1109	571	11418	7765	3996
OJUI-01-32 / OJUI-21-32	2900	1972	1015	20300	13804	7104



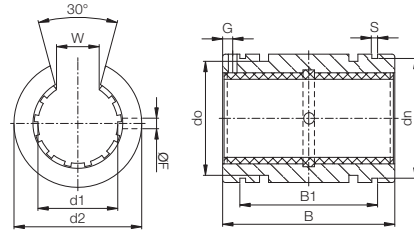
Internet: <http://www.igus.com>
 email: sales@igus.com
 QuickSpec: <http://www.igus.com/iglide-quickspec>

DryLin® R Self-Aligning, Open Linear Plain Bearing, inch



Special Properties

- Hard anodized aluminum adapter
- Dimensionally interchangeable with linear ball bearings
- Equipped with liner made of iglide® J
Temperature range -40°F to +194°F
JUJO-01 (standard), JUJO-20 (low clearance)
- T500 liner optional for chemicals/high temps
(up to 482°F for steel housing, 356°F for aluminum)
- Suitable shafting for iglide® J: DryLin® AWI aluminum, case-hardened, 300 series stainless
Best shafting for T500: hard-chrome and hard-stainless steel



OJUI-03, Standard Clearance

Dimensions (inch)

Part No.	Ø Shaft	Tolerance*	d2 ISO h8	ds ISO h10	F +0.004	G +0.004	do	B1 ISO H10	s ISO H10	dn ISO h10	B ISO h10	W +0.012
OJUI-03-08	1/2	.0016 -.0032	.8673	.8556	.1360	.6250	.6846	.987	.0520	.8200	1.2461	.3940
OJUI-03-10	5/8	.0016 -.0032	1.1173	1.1055	.1360	.1250	.9346	1.136	.0620	1.0600	1.4961	.4330
OJUI-03-12	3/4	.0016 -.0032	1.2421	1.2300	.1360	.1250	1.0590	1.198	.0620	1.1770	1.6173	.4920
OJUI-03-16	1	.0016 -.0032	1.5547	1.5271	.1360	.1250	1.3720	1.789	.0740	1.4710	2.2421	.6300
OJUI-03-20	1-1/4	.0020 -.0041	1.9881	1.9606	.2010	.1875	1.8094	2.039	.0740	1.8890	2.6173	.7090
OJUI-03-24	1-1/2	.0020 -.0041	2.3634	2.3358	.2010	.1875	2.1130	2.463	.0950	2.2410	2.9921	.8660
OJUI-03-32	2	.0024 -.0051	2.988	2.9606	.2650	.3125	2.7378	3.249	.1110	2.8390	3.9921	1.1810

OJUI-23, Low Clearance

Dimensions (inch)

Part No.	Ø Shaft	Tolerance*	d2 ISO h8	ds ISO h10	F +0.004	G +0.004	do	B1 ISO H10	s ISO H10	dn ISO h10	B ISO h10	W +0.012
OJUI-23-08	1/2	.0008 -.0016	.8673	.8556	.1360	.6250	.6846	.987	.0520	.8200	1.2461	.3940
OJUI-23-10	5/8	.0008 -.0016	1.1173	1.1055	.1360	.1250	.9346	1.136	.0620	1.0600	1.4961	.4330
OJUI-23-12	3/4	.0008 -.0016	1.2421	1.2300	.1360	.1250	1.0590	1.198	.0620	1.1770	1.6173	.4920
OJUI-23-16	1	.0008 -.0016	1.5547	1.5271	.1360	.1250	1.3720	1.789	.0740	1.4710	2.2421	.6300
OJUI-23-20	1-1/4	.0010 -.0021	1.9881	1.9606	.2010	.1875	1.8094	2.039	.0740	1.8890	2.6173	.7090
OJUI-23-24	1-1/2	.0010 -.0021	2.3634	2.3358	.2010	.1875	2.1130	2.463	.0950	2.2410	2.9921	.8660
OJUI-23-32	2	.0012 -.0026	2.988	2.9606	.2650	.3125	2.7378	3.249	.1110	2.8390	3.9921	1.1810

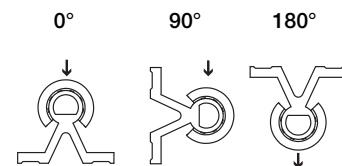
* according to iglus® testing method ▶ Page 29.57

Housing Bore Recommendations

Nominal ID Size	Min.	Max.
1/4	0.5000	0.5007
3/8	0.6250	0.6257
1/2	0.8750	0.8758
5/8	1.1250	1.1258
3/4	1.2500	1.2510
1	1.5625	1.5635
1-1/4	2.0000	2.0010
1-1/2	2.3750	2.3760
2	3.0000	3.0010

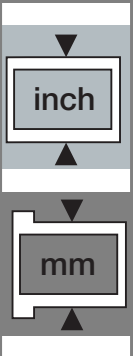
Load Data

Part No.	pmax. Dynamic Load			pmax. Static Load		
	P = 725 psi			P = 5075 psi		
	0°	90°	180°	0°	90°	180°
OJUI-03-08 / OJUI-23-08	226	154	80	1585	1078	555
OJUI-03-10 / OJUI-23-10	340	231	118	2378	1617	832
OJUI-03-12 / OJUI-23-12	408	277	143	2854	1942	998
OJUI-03-16 / OJUI-23-16	590	400	206	4123	2804	1443
OJUI-03-20 / OJUI-23-20	1189	809	416	8323	5659	2912
OJUI-03-24 / OJUI-23-24	1631	1109	571	11418	7765	3996
OJUI-03-32 / OJUI-23-32	2900	1972	1015	20300	13804	7104



DryLin® R
Linear Guide Systems

PDF: www.igus.com/iglide-pdfs
CAD: www.igus.com/iglide-CAD
RoHS info: www.igus.com/RoHS



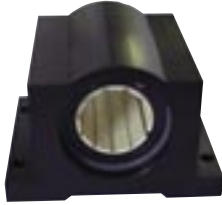


DryLin® R Straight Bearing, Closed Pillow Block, inch

DryLin® R
Linear Guide Systems

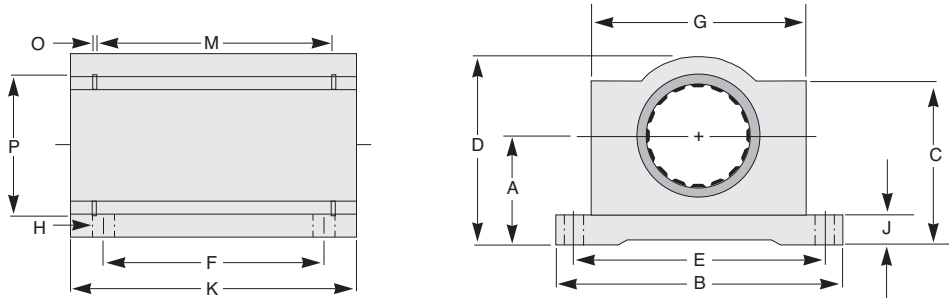
Telephone 1-800-521-2747
Fax 1-401-438-7270

Internet: <http://www.igus.com>
email: sales@igus.com
QuickSpec: <http://www.igus.com/iglide-quickspec>



Special Properties

- Closed, anodized aluminum housing
- Liner JUI-01 made of iglide® J is contained according to standard tolerances
- Can be fitted with iglide® T500 liner material for temperatures up to 356°F
- Low clearance liners optional
- Dimensionally interchangeable with ball bearings



RJUI-XX, Bearing

Dimensions (inch)

Part No.	Nom. Size	A ±.001	B	C	D ±.010	E ±.010	F	G	H		J	K	M	O	P
									BOLT	HOLE					
RJZI- <input type="text"/> -04	1/4	0.437	1.625	0.750	0.813	1.312	0.750	1.000	#6	5/32	0.188	1.188	0.750	0.039	0.532
RJUI- <input type="text"/> -06	3/8	0.500	1.750	0.875	0.938	1.437	0.875	1.125	#6	5/32	0.188	1.313	0.875	0.039	0.665
RJUI- <input type="text"/> -08	1/2	0.687	2.000	1.125	1.250	1.688	1.000	1.375	#6	5/32	0.250	1.688	1.250	0.046	0.931
RJUI- <input type="text"/> -10	5/8	0.875	2.500	1.438	1.625	2.125	1.125	1.750	#8	3/16	0.281	1.938	1.500	0.056	1.197
RJUI- <input type="text"/> -12	3/4	0.937	2.750	1.563	1.750	2.375	1.250	1.875	#8	3/16	0.313	2.063	1.625	0.056	1.330
RJUI- <input type="text"/> -16	1	1.187	3.250	1.938	2.188	2.875	1.750	2.375	#10	7/32	0.375	2.813	2.250	0.068	1.671
RJUI- <input type="text"/> -20	1-1/4	1.500	4.000	2.500	2.813	3.500	2.000	3.000	#10	7/32	0.438	3.625	2.625	0.068	2.122
RJUI- <input type="text"/> -24	1-1/2	1.750	4.750	2.875	3.250	4.125	2.500	3.500	1/4	9/32	0.500	4.000	3.000	0.086	2.519
RJUI- <input type="text"/> -32	2	2.125	6.000	3.625	4.063	5.250	3.250	4.500	3/8	13/32	0.625	5.000	4.000	0.103	3.182

Supplement the part number with one of the following choices.
Example: RJUI--04 for a self aligning version

For Straight bearing use (see page 29.12)

For Self-Aligning bearing use (see page 29.13)

For Low Clearance Straight use (see page 29.12)

For Low Clearance Self-Aligning use (see page 29.13)



Online lifetime calculation
www.igus.com

Load Data

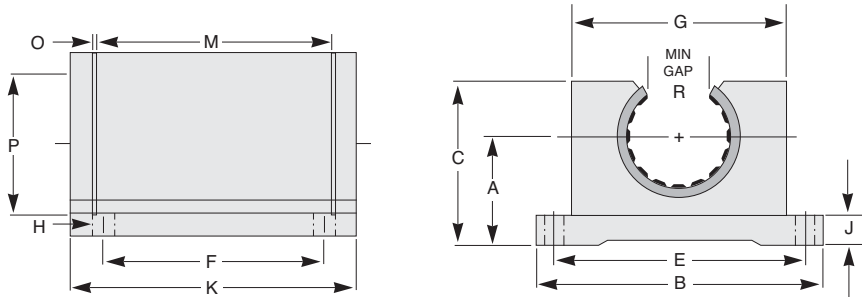
Part No.	Dynamic Load (lbs)		Static Load (lbs)	
	P = 725 psi		P = 5075 psi	
RJZI- <input type="text"/> -04	135	946		
RJUI- <input type="text"/> -06	118	828		
RJUI- <input type="text"/> -08	225	1575		
RJUI- <input type="text"/> -10	338	2365		
RJUI- <input type="text"/> -12	439	3077		
RJUI- <input type="text"/> -16	811	5678		
RJUI- <input type="text"/> -20	1184	8287		
RJUI- <input type="text"/> -24	1622	11358		
RJUI- <input type="text"/> -32	2885	20198		

DryLin® R Straight Bearing, Open Pillow Block, inch



Special Properties

- Open, anodized aluminum housing
- Liner JUI-01 made of iglide® J is contained according to standard tolerances
- Can be fitted with iglide® T500 liner material for temperatures up to 356°F
- Low clearance liners optional
- Dimensionally interchangeable with ball bearings



OJUI-XX, Bearing

Dimensions (inch)

Part No.	Nom. Size	A ±.001	B	C	E ±.010	F ±.010	G	H		J	K	M	O	P	R
								BOLT	HOLE						
OJUI-□-08	1/2	0.687	2.000	1.125	1.688	1.000	1.375	#6	5/32	0.250	1.688	1.250	0.046	0.931	0.313
OJUI-□-10	5/8	0.875	2.500	1.438	2.125	1.125	1.750	#8	3/16	0.281	1.938	1.500	0.056	1.197	0.375
OJUI-□-12	3/4	0.937	2.750	1.563	2.375	1.250	1.875	#8	3/16	0.313	2.063	1.625	0.056	1.330	0.438
OJUI-□-16	1	1.187	3.250	1.938	2.875	1.750	2.375	#10	7/32	0.375	2.813	2.250	0.068	1.671	0.563
OJUI-□-20	1-1/4	1.500	4.000	2.500	3.500	2.000	3.000	#10	7/32	0.438	3.625	2.625	0.068	2.122	0.625
OJUI-□-24	1-1/2	1.750	4.750	2.875	4.125	2.500	3.500	1/4	9/32	0.500	4.000	3.000	0.086	2.519	0.750
OJUI-□-32	2	2.125	6.000	3.625	5.250	3.250	4.500	3/8	13/32	0.625	5.000	4.000	0.103	3.182	1.000

Supplement the part number with one of the following choices.
Example: OJUI-**13**-04 for a self aligning version

For Straight bearing use **11** (see page 29.16)

For Self-Aligning bearing use **13** (see page 29.17)

For Low Clearance Straight use **31** (see page 29.16)

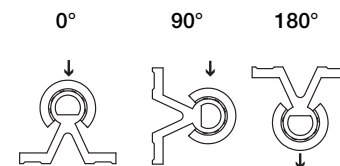
For Low Clearance Self-Aligning use **33** (see page 29.17)



Online lifetime calculation
www.igus.com

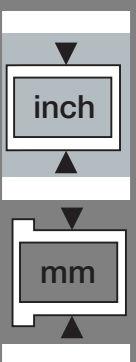
Load Data

Part No.	pmax. Dynamic Load			pmax. Static Load		
	P = 725 psi			P = 5075 psi		
	0°	90°	180°	0°	90°	180°
OJUI- XX -08	226	154	80	1585	1078	555
OJUI- XX -10	340	231	118	2378	1617	832
OJUI- XX -12	408	277	143	2854	1942	998
OJUI- XX -16	590	400	206	4123	2804	1443
OJUI- XX -20	1189	809	416	8323	5659	2912
OJUI- XX -24	1631	1109	571	11418	7765	3996
OJUI- XX -32	2900	1972	1015	20300	13804	7104



DryLin® R
Linear Guide Systems

PDF: www.igus.com/iglide-pdfs
CAD: www.igus.com/iglide-CAD
RoHS info: www.igus.com/RoHS

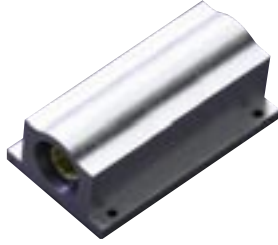




iglus®

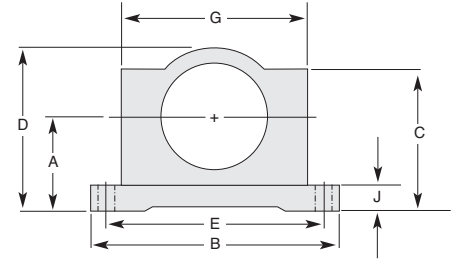
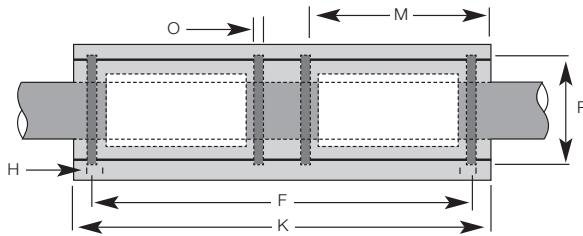
DryLin® R Straight Bearing, Closed Twin Pillow Block, inch,

DryLin® R
Linear Guide Systems



Special Properties

- Closed, anodized aluminum housing, twin design
- Liner JUI-01 made of iglide® J is contained according to standard tolerances
- Can be fitted with iglide® T500 liner material for temperatures up to 356°F
- Low clearance liners optional
- Dimensionally interchangeable with ball bearings



RJUI-XX-XXTW, Twin Pillow Block

Dimensions (inch)

Part No.	Nom. Size	A ±.001	B	C	D ±.010	E ±.010	F	G	H BOLT HOLE	J	K	M	O	P
RJZI-□-04TW	1/4	0.437	1.625	0.750	0.813	1.312	2.000	1.000	#6 5/32	0.188	2.500	0.750	0.039	0.532
RJUI-□-06TW	3/8	0.500	1.750	0.875	0.938	1.437	2.250	1.125	#6 5/32	0.188	2.750	0.875	0.039	0.665
RJUI-□-08TW	1/2	0.687	2.000	1.125	1.250	1.688	2.500	1.375	#6 5/32	0.250	3.500	1.250	0.046	0.931
RJUI-□-10TW	5/8	0.875	2.500	1.438	1.625	2.125	3.000	1.750	#8 3/16	0.281	4.000	1.500	0.056	1.197
RJUI-□-12TW	3/4	0.937	2.750	1.563	1.750	2.375	3.500	1.875	#8 3/16	0.313	4.500	1.625	0.056	1.330
RJUI-□-16TW	1	1.187	3.250	1.938	2.188	2.875	4.500	2.375	#10 7/32	0.375	6.000	2.250	0.068	1.671
RJUI-□-20TW	1-1/4	1.500	4.000	2.500	2.813	3.500	5.500	3.000	#10 7/32	0.438	7.500	2.625	0.068	2.122
RJUI-□-24TW	1-1/2	1.750	4.750	2.875	3.250	4.125	6.500	3.500	1/4 9/32	0.500	9.000	3.000	0.086	2.519
RJUI-□-32TW	2	2.125	6.000	3.625	4.063	5.250	8.250	4.500	3/8 13/32	0.625	10.000	4.000	0.103	3.182

Supplement the part number with one of the following choices.
Example: RJUI-13-04TW for a self aligning version

For Straight bearing use 11 (see page 29.12)

For Self-Aligning bearing use 13 (see page 29.13)

For Low Clearance Straight use 31 (see page 29.12)

For Low Clearance Self-Aligning use 33 (see page 29.13)



Online lifetime calculation
www.igus.com

Load Data

Part No.	Dynamic Load (lbs)	Static Load (lbs)
	P = 725 psi	P = 5075 psi
RJZI-XX-04TW	135	946
RJUI-XX-06TW	118	828
RJUI-XX-08TW	225	1575
RJUI-XX-10TW	338	2365
RJUI-XX-12TW	439	3077
RJUI-XX-16TW	811	5678
RJUI-XX-20TW	1184	8287
RJUI-XX-24TW	1622	11358
RJUI-XX-32TW	2885	20198

Telephone 1-800-521-2747
1-401-438-7270
Fax

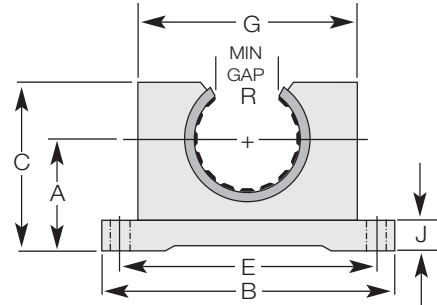
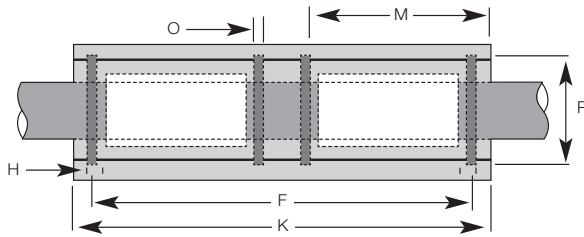
Internet: <http://www.igus.com>
email: sales@igus.com
QuickSpec: <http://www.igus.com/iglide-quickspec>

DryLin® R Straight Bearing, Open Twin Pillow Block, inch



Special Properties

- Open, anodized aluminum housing, twin design
- Liner JU10-01 made of iglide® J is contained according to standard tolerances
- Can be fitted with iglide® T500 liner material for temperatures up to 356°F
- Low clearance liners optional
- Dimensionally interchangeable with ball bearings



OJUI-XX-XXTW, Straight Bearing

Dimensions (inch)

Part No.	Nom. Size	A ±.001	B	C	E ±.010	F ±.010	G	H BOLT HOLE	J	K	M	O	P	R
OJUI-□-08TW	1/2	0.687	2.000	1.125	1.688	2.500	1.375	#6 5/32	0.250	3.500	1.250	0.046	0.931	0.313
OJUI-□-10TW	5/8	0.875	2.500	1.438	2.125	3.000	1.750	#8 3/16	0.281	4.000	1.500	0.056	1.197	0.375
OJUI-□-12TW	3/4	0.937	2.750	1.563	2.375	3.500	1.875	#8 3/16	0.313	4.500	1.625	0.056	1.330	0.438
OJUI-□-16TW	1	1.187	3.250	1.938	2.875	4.500	2.375	#10 7/32	0.375	6.000	2.250	0.068	1.671	0.563
OJUI-□-20TW	1-1/4	1.500	4.000	2.500	3.500	5.500	3.000	#10 7/32	0.438	7.500	2.625	0.068	2.122	0.625
OJUI-□-24TW	1-1/2	1.750	4.750	2.875	4.125	6.500	3.500	1/4 9/32	0.500	9.000	3.000	0.086	2.519	0.750
OJUI-□-32TW	2	2.125	6.000	3.625	5.250	8.250	4.500	3/8 13/32	0.625	10.000	4.000	0.103	3.182	1.000

Supplement the part number with one of the following choices.
Example: OJUI-13-04TW for a self aligning version

For Straight bearing use **11** (see page 29.16)

For Self-Aligning bearing use **13** (see page 29.17)

For Low Clearance Straight use **31** (see page 29.16)

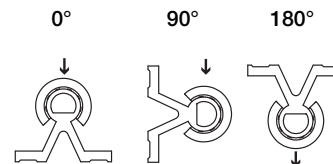
For Low Clearance Self-Aligning use **33** (see page 29.17)



Online lifetime calculation
www.igus.com

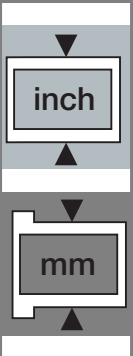
Load Data

Part No.	pmax. Dynamic Load			pmax. Static Load		
	P = 725 psi			P = 5075 psi		
	0°	90°	180°	0°	90°	180°
OJUI-XX-08TW	226	154	80	1585	1078	555
OJUI-XX-10TW	340	231	118	2378	1617	832
OJUI-XX-12TW	408	277	143	2854	1942	998
OJUI-XX-16TW	590	400	206	4123	2804	1443
OJUI-XX-20TW	1189	809	416	8323	5659	2912
OJUI-XX-24TW	1631	1109	571	11418	7765	3996
OJUI-XX-32TW	2900	1972	1015	20300	13804	7104



DryLin® R
Linear Guide Systems

PDF: www.igus.com/iglide-pdfs
CAD: www.igus.com/iglide-CAD
RoHS info: www.igus.com/RoHS

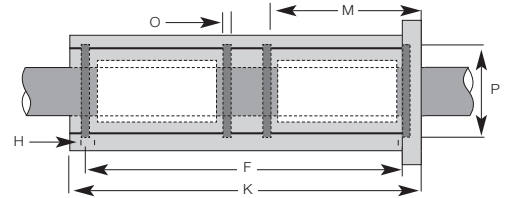
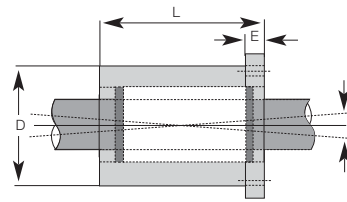
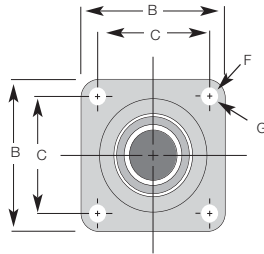




DryLin® R Flange Pillow Block, inch

Special Properties

- Flange housing made of anodized aluminum, square flange
- Liner JUI-02 made of iglide® J
- Can be fitted with iglide® T500 liner material for temperatures up to 356°F
- Low clearance liners optional



DryLin® R
Linear Guide Systems

Telephone 1-800-521-2747
1-401-438-7270
Fax



FJUI-XX, Pillow Blocks

Dimensions (inch)

Flange, Square

Part no.	Bearing ID	B	C	D	E	F Bolt Size	G	L
FJUI-□-08	1/2	1.63	1.25	1.25	.250	#8	.187	1.687
FJUI-□-12*	3/4	2.38	1.75	1.75	.375	#10	.219	2.067
FJUI-□-16*	1	2.75	2.125	2.25	.500	1/4	.281	2.812

Twin Flange, Square

Part no.	Bearing ID	B	C	D	E	F Bolt Size	G	L
FJUI-□-08TW	1/2	1.63	1.25	1.25	.250	#8	.187	3.375
FJUI-□-12TW	3/4	2.38	1.75	1.75	.375	#10	.219	4.188
FJUI-□-16TW	1	2.75	2.125	2.25	.500	1/4	.281	5.625



Supplement the part number with one of the following choices.

Example: FJUI-13-08TW for a self aligning version

For Straight bearing use 11 (see page 29.12)

For Self-Aligning bearing use 13 (see page 29.13)

For Low Clearance Straight use 31 (see page 29.12)

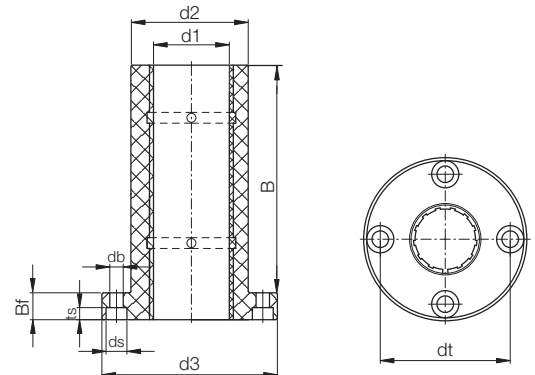
For Low Clearance Self-Aligning use 33 (see page 29.13)

FJUIT-01-XX, Twin Flange Pillow Block, Round, Low cost



Special Properties

- Flange housing made of anodized aluminum, round flange
- 2x liner JUI-01 made of iglide® J
- More sizes may be available upon request
- Can be fitted with iglide® T500 liner material for temperatures up to 356°F
- Low clearance liners optional



Dimensions (inch)

Part No.	d1	d2 ISO h7	d3	dt	B	Bf	ts	db	ds	Bolt Screw size
FJUIT-01-12	3/4	1.260	2.126	1.693	2.72	.433	.203	.219	.343	#10
FJUIT-01-16	1	1.575	2.441	2.000	3.98	.433	.203	.219	.343	#10

Internet: <http://www.igus.com>
email: sales@igus.com
QuickSpec: <http://www.igus.com/iglide-quickspec>